

# Terra Casegoods for Treatment Areas



## Standard Features

- Laminate case and top with PVC edge
- Plinth base with adjustable glides
- Dry construction joinery
- Replaceable components
- Nemschoff healthcare wood finish
- Indoor Advantage Gold Certified
- Limited Lifetime Warranty

## More Information

[Illustrated Glossary ▶ 964](#)

[Model Number Index ▶ 971](#)

[MicrobeCare ▶ 974](#)

[Fabrics ▶ 991](#)

[Flammability \(CTB 133\) ▶ 994](#)

[Multiple Fabric Illustrations ▶ 995](#)

[Finishes ▶ 1003](#)

[Warranties ▶ 1009](#)

[Ordering ▶ 1012](#)

[View product on nemschoff.com](#)

[Product brochure](#)

Patient Chairs

Recliners

Rockers &amp; Gliders

Overbed Tables

Sleepover Seating

Casegoods

Accessories

# Terra Treatment Pre-configured Units

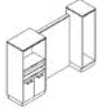
## Terra Treatment Pre-configured Units

### Standard Features

- Same standard features as Terra Casegoods for Treatment Areas features, plus:
- Laminate privacy panel between the end cabinets

### Notes

All pre-configured weights are based on a total of all units included plus an adjustable resin screen.



### Terra Single-Sided Unit, 80.75" Wide - TV Cabinet and RSF Wardrobe

Weight: 345 lbs

	Price	Depth	Height
<i>List prices for base model</i>	\$3,598	18"	54"

#### Step 1.

**TRA**

#### Step 2. Size

**100** 80.75" +\$3598

#### Step 3. Case Material

**L** laminate +\$0  
**W** veneer +\$683

#### Step 4. Top Material

**L** laminate top/edge +\$0  
**K** solid surface top/edge +\$765

#### Step 5. Privacy Screen Material

*For laminate (L)*

**A** adjustable 3form screen +\$1092  
**F** fixed 3form screen +\$602  
**L** laminate privacy panel +\$0

*For veneer (W)*

**A** adjustable 3form screen +\$1092  
**F** fixed 3form screen +\$602  
**W** wood privacy panel +\$0

#### Step 6. Lock Type for Doors

**T** lock on TV cabinet doors +\$68  
**N** no lock +\$0

#### Step 7. Pull Type/Finish

**2C** Bedford 2C chrome pull/finish +\$0  
**3C** Bedford 3C chrome pull/finish +\$0  
**2** Bedford brass pull/finish +\$0  
**3N** Bedford brushed nickel pull/finish +\$0  
**13** Cirrus espresso pull/finish +\$0  
**14** Cirrus ice pull/finish +\$0  
**8** Montello brushed nickel pull/finish +\$0  
**17** Prague II nickel pull/finish +\$0  
**17R** Prague II rubbed bronze pull/finish +\$0  
**10** Prito cloud pull/finish +\$0  
**11** Prito pewter pull/finish +\$0  
**12** Prito sable pull/finish +\$0  
**16** Ten black contemporary pull/finish +\$0  
**19** Terra steel pull/finish +\$0

#### Step 8. Lock Option

*For lock on TV cabinet doors (T)*

**KE** keyed alike but each unit unique +\$0

#### Step 9. Power Outlets

**NPO** no power outlets +\$0  
**POS** power outlet behind lowest pullout shelf +\$271  
**POT** power outlet behind TV cabinet +\$271  
**POB** power outlets behind TV cabinet and pullout shelf +\$542

#### Step 10. Laminate Case Finish

*For laminate (L) with laminate privacy panel (L), or fixed 3form screen (F), or adjustable 3form screen (A)*

**HX** aged cherry +\$0  
**2K** aged teak +\$0  
**8D** ash grey +\$0  
**BKN** black +\$0  
**OW** dark brown walnut +\$0  
**OX** dark folkstone grey +\$0  
**1K** dark khaki +\$0  
**OS** dark sand +\$0  
**OV** dark sandstone +\$0  
**8Q** folkstone grey +\$0  
**OG** honey maple +\$0  
**LQT** laminate quote option +\$0  
**76** light brown walnut +\$0  
**OR** light khaki +\$0  
**OU** light sand +\$0  
**WY** medium cherry +\$0  
**HM** natural maple +\$0  
**WL** sandstone +\$0  
**LU** soft white +\$0  
**98** studio white +\$0  
**HY** walnut on cherry +\$0  
**91** white +\$0

#### Step 10. Wood Case Finish

*For veneer (W) with wood privacy panel (W), or fixed 3form screen (F), or adjustable 3form screen (A)*

**ED** aged cherry +\$0  
**IZ** aged teak +\$0  
**40** dark brown walnut +\$0  
**5K** honey maple +\$0

## Terra Treatment Pre-configured Units

**Step 10. Wood Case Finish**

For veneer (W) with wood privacy panel (W), or fixed 3form screen (F), or adjustable 3form screen (A)

<b>ED</b>	aged cherry	+\$0
<b>IZ</b>	aged teak	+\$0
<b>40</b>	dark brown walnut	+\$0
<b>5K</b>	honey maple	+\$0
<b>2U</b>	light brown walnut	+\$0
<b>0Z</b>	medium cherry	+\$0
<b>UL</b>	natural maple	+\$0
<b>STP</b>	stain-to-match on maple (nonstandard)	+\$22
<b>WQT</b>	veneer quote option	+\$0
<b>UX</b>	walnut on cherry	+\$0

**Step 11. Laminate Top/Edge Finish**

For laminate top/edge (L)

<b>HX</b>	aged cherry	+\$0
<b>2K</b>	aged teak	+\$0
<b>8D</b>	ash grey	+\$0
<b>BKN</b>	black	+\$0
<b>0W</b>	dark brown walnut	+\$0
<b>0X</b>	dark folkstone grey	+\$0
<b>1K</b>	dark khaki	+\$0
<b>0S</b>	dark sand	+\$0
<b>0V</b>	dark sandstone	+\$0
<b>8Q</b>	folkstone grey	+\$0
<b>0G</b>	honey maple	+\$0
<b>LQT</b>	laminate quote option	+\$0
<b>76</b>	light brown walnut	+\$0
<b>0R</b>	light khaki	+\$0
<b>0U</b>	light sand	+\$0
<b>WY</b>	medium cherry	+\$0
<b>HM</b>	natural maple	+\$0
<b>WL</b>	sandstone	+\$0
<b>LU</b>	soft white	+\$0
<b>98</b>	studio white	+\$0
<b>HY</b>	walnut on cherry	+\$0
<b>91</b>	white	+\$0

**Step 11. Solid Surface Top/Edge Finish**

For solid surface top/edge (K)

<b>QB</b>	bisque	+\$0
<b>58</b>	cameo white	+\$0
<b>CQ</b>	glacier white	+\$0

**Step 12. 3form Finish**

For fixed 3form screen (F) or adjustable 3form screen (A)

<b>FHG</b>	hush gesso	+\$0
<b>FIW</b>	ion wheat	+\$0
<b>FPW</b>	varia pure white	+\$0

**Step 13. Pull Finish**

For fixed 3form screen (F) or adjustable 3form screen (A)

<b>QB</b>	bisque	+\$0
<b>58</b>	cameo white	+\$0
<b>CQ</b>	glacier white	+\$0

**Step 14. MicrobeCare Selection**

<b>MCN</b>	no MicrobeCare protection	+\$0
------------	---------------------------	------

Patient Chairs

Recliners

Rockers &amp; Gliders

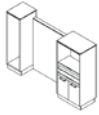
Overbed Tables

Sleepover Seating

Casegoods

Accessories

# Terra Treatment Pre-configured Units



## Terra Single-Sided Unit, 80.75" Wide - TV Cabinet and LSF Wardrobe

Weight: 345 lbs

	Price	Depth	Height
<i>List prices for base model</i>	\$3,598	18"	54"

### Step 1.

#### TRA

### Step 2. Size

<b>101</b>	80.75"		+\$3598
------------	--------	--	---------

### Step 3. Case Material

<b>L</b>	laminate		+\$0
<b>W</b>	veneer		+\$683

### Step 4. Top Material

<b>L</b>	laminate top/edge		+\$0
<b>K</b>	solid surface top/edge		+\$765

### Step 5. Privacy Screen Material

*For laminate (L)*

<b>A</b>	adjustable 3form screen		+\$1092
<b>F</b>	fixed 3form screen		+\$602
<b>L</b>	laminate privacy panel		+\$0

*For veneer (W)*

<b>A</b>	adjustable 3form screen		+\$1092
<b>F</b>	fixed 3form screen		+\$602
<b>W</b>	wood privacy panel		+\$0

### Step 6. Lock Type for Doors

<b>T</b>	lock on TV cabinet doors		+\$68
<b>N</b>	no lock		+\$0

### Step 7. Pull Type/Finish

<b>2C</b>	Bedford 2C chrome pull/finish		+\$0
<b>3C</b>	Bedford 3C chrome pull/finish		+\$0
<b>2</b>	Bedford brass pull/finish		+\$0
<b>3N</b>	Bedford brushed nickel pull/finish		+\$0
<b>13</b>	Cirrus espresso pull/finish		+\$0
<b>14</b>	Cirrus ice pull/finish		+\$0
<b>8</b>	Montello brushed nickel pull/finish		+\$0
<b>17</b>	Prague II nickel pull/finish		+\$0
<b>17R</b>	Prague II rubbed bronze pull/finish		+\$0
<b>10</b>	Pristo cloud pull/finish		+\$0
<b>11</b>	Pristo pewter pull/finish		+\$0
<b>12</b>	Pristo sable pull/finish		+\$0
<b>16</b>	Ten black contemporary pull/finish		+\$0
<b>19</b>	Terra steel pull/finish		+\$0

### Step 8. Lock Option

*For lock on TV cabinet doors (T)*

<b>KE</b>	keyed alike but each unit unique		+\$0
-----------	----------------------------------	--	------

### Step 9. Power Outlets

<b>NPO</b>	no power outlets		+\$0
<b>POS</b>	power outlet behind lowest pullout shelf		+\$271
<b>POT</b>	power outlet behind TV cabinet		+\$271
<b>POB</b>	power outlets behind TV cabinet and pullout shelf		+\$542

### Step 10. Laminate Case Finish

*For laminate (L) with laminate privacy panel (L), or fixed 3form screen (F), or adjustable 3form screen (A)*

<b>HX</b>	aged cherry		+\$0
<b>2K</b>	aged teak		+\$0
<b>8D</b>	ash grey		+\$0
<b>BKN</b>	black		+\$0
<b>OW</b>	dark brown walnut		+\$0
<b>OX</b>	dark folkstone grey		+\$0
<b>1K</b>	dark khaki		+\$0
<b>OS</b>	dark sand		+\$0
<b>OV</b>	dark sandstone		+\$0
<b>8Q</b>	folkstone grey		+\$0
<b>OG</b>	honey maple		+\$0
<b>LQT</b>	laminate quote option		+\$0
<b>76</b>	light brown walnut		+\$0
<b>OR</b>	light khaki		+\$0
<b>OU</b>	light sand		+\$0
<b>WY</b>	medium cherry		+\$0
<b>HM</b>	natural maple		+\$0
<b>WL</b>	sandstone		+\$0
<b>LU</b>	soft white		+\$0
<b>98</b>	studio white		+\$0
<b>HY</b>	walnut on cherry		+\$0
<b>91</b>	white		+\$0

### Step 10. Wood Case Finish

*For veneer (W) with wood privacy panel (W), or fixed 3form screen (F), or adjustable 3form screen (A)*

<b>ED</b>	aged cherry		+\$0
<b>IZ</b>	aged teak		+\$0
<b>40</b>	dark brown walnut		+\$0
<b>5K</b>	honey maple		+\$0
<b>2U</b>	light brown walnut		+\$0
<b>OZ</b>	medium cherry		+\$0
<b>UL</b>	natural maple		+\$0
<b>STP</b>	stain-to-match on maple (nonstandard)		+\$22
<b>WQT</b>	veneer quote option		+\$0
<b>UX</b>	walnut on cherry		+\$0

### Step 11. Laminate Top/Edge Finish

*For laminate top/edge (L)*

<b>HX</b>	aged cherry		+\$0
<b>2K</b>	aged teak		+\$0
<b>8D</b>	ash grey		+\$0
<b>BKN</b>	black		+\$0
<b>OW</b>	dark brown walnut		+\$0
<b>OX</b>	dark folkstone grey		+\$0
<b>1K</b>	dark khaki		+\$0
<b>OS</b>	dark sand		+\$0
<b>OV</b>	dark sandstone		+\$0
<b>8Q</b>	folkstone grey		+\$0

## Terra Treatment Pre-configured Units

<b>OG</b>	honey maple	+\$0
<b>LQT</b>	laminated quote option	+\$0
<b>76</b>	light brown walnut	+\$0
<b>OR</b>	light khaki	+\$0
<b>OU</b>	light sand	+\$0
<b>WY</b>	medium cherry	+\$0
<b>HM</b>	natural maple	+\$0
<b>WL</b>	sandstone	+\$0
<b>LU</b>	soft white	+\$0
<b>98</b>	studio white	+\$0
<b>HY</b>	walnut on cherry	+\$0
<b>91</b>	white	+\$0

**Step 11. Solid Surface Top/Edge Finish***For solid surface top/edge (K)*

<b>QB</b>	bisque	+\$0
<b>58</b>	cameo white	+\$0
<b>CQ</b>	glacier white	+\$0

**Step 12. 3form Finish***For fixed 3form screen (F) or adjustable 3form screen (A)*

<b>FHG</b>	hush gesso	+\$0
<b>FIW</b>	ion wheat	+\$0
<b>FPW</b>	varia pure white	+\$0

**Step 13. Pull Finish***For fixed 3form screen (F) or adjustable 3form screen (A)*

<b>QB</b>	bisque	+\$0
<b>58</b>	cameo white	+\$0
<b>CQ</b>	glacier white	+\$0

**Step 14. MicrobeCare Selection**

<b>MCN</b>	no MicrobeCare protection	+\$0
------------	---------------------------	------

Patient Chairs

Recliners

Rockers &amp; Gliders

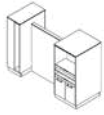
Overbed Tables

Sleepover Seating

Casegoods

Accessories

# Terra Treatment Pre-configured Units



## Terra Shared Unit, 80.75" Wide - TV Cabinet and Wardrobe

Weight: 600 lbs

	Price	Depth	Height
<i>List prices for base model</i>	\$5,011	30"	54"

### Step 1.

#### TRA

### Step 2. Size

<b>102</b>	80.75" wide	+ \$5011
------------	-------------	----------

### Step 3. Case Material

<b>L</b>	laminate	+\$0
<b>W</b>	veneer	+\$683

### Step 4. Top Material

<b>L</b>	laminate top/edge	+\$0
<b>K</b>	solid surface top/edge	+\$983

### Step 5. Privacy Screen Material

*For laminate (L)*

<b>A</b>	adjustable 3form screen	+\$1092
<b>F</b>	fixed 3form screen	+\$602
<b>L</b>	laminate privacy panel	+\$0

*For veneer (W)*

<b>A</b>	adjustable 3form screen	+\$1092
<b>F</b>	fixed 3form screen	+\$602
<b>W</b>	wood privacy panel	+\$0

### Step 6. Lock Type for Doors

<b>T</b>	lock on TV cabinet doors	+\$136
<b>N</b>	no lock	+\$0

### Step 7. Pull Type/Finish

<b>2C</b>	Bedford 2C chrome pull/finish	+\$0
<b>3C</b>	Bedford 3C chrome pull/finish	+\$0
<b>2</b>	Bedford brass pull/finish	+\$0
<b>3N</b>	Bedford brushed nickel pull/finish	+\$0
<b>13</b>	Cirrus espresso pull/finish	+\$0
<b>14</b>	Cirrus ice pull/finish	+\$0
<b>8</b>	Montello brushed nickel pull/finish	+\$0
<b>17</b>	Prague II nickel pull/finish	+\$0
<b>17R</b>	Prague II rubbed bronze pull/finish	+\$0
<b>10</b>	Pristo cloud pull/finish	+\$0
<b>11</b>	Pristo pewter pull/finish	+\$0
<b>12</b>	Pristo sable pull/finish	+\$0
<b>16</b>	Ten black contemporary pull/finish	+\$0
<b>19</b>	Terra steel pull/finish	+\$0

### Step 8. Lock Option

*For lock on TV cabinet doors (T)*

<b>KE</b>	keyed alike but each unit unique	+\$0
-----------	----------------------------------	------

### Step 9. Power Outlets

<b>NPO</b>	no power outlets	+\$0
<b>P2S</b>	two power outlets behind lowest pullout shelf	+\$542
<b>P2T</b>	two power outlets behind TV cabinet	+\$542

<b>P2B</b>	two power outlets behind TV cabinet and two power outlets behind lowest pullout shelf	+\$1084
------------	---------------------------------------------------------------------------------------	---------

### Step 10. Laminate Case Finish

*For laminate (L) with laminate privacy panel (L), or fixed 3form screen (F), or adjustable 3form screen (A)*

<b>HX</b>	aged cherry	+\$0
<b>2K</b>	aged teak	+\$0
<b>8D</b>	ash grey	+\$0
<b>BKN</b>	black	+\$0
<b>OW</b>	dark brown walnut	+\$0
<b>OX</b>	dark folkstone grey	+\$0
<b>1K</b>	dark khaki	+\$0
<b>OS</b>	dark sand	+\$0
<b>OV</b>	dark sandstone	+\$0
<b>8Q</b>	folkstone grey	+\$0
<b>OG</b>	honey maple	+\$0
<b>LQT</b>	laminate quote option	+\$0
<b>76</b>	light brown walnut	+\$0
<b>OR</b>	light khaki	+\$0
<b>OU</b>	light sand	+\$0
<b>WY</b>	medium cherry	+\$0
<b>HM</b>	natural maple	+\$0
<b>WL</b>	sandstone	+\$0
<b>LU</b>	soft white	+\$0
<b>98</b>	studio white	+\$0
<b>HY</b>	walnut on cherry	+\$0
<b>91</b>	white	+\$0

### Step 10. Wood Case Finish

*For veneer (W) with wood privacy panel (W), or fixed 3form screen (F), or adjustable 3form screen (A)*

<b>ED</b>	aged cherry	+\$0
<b>IZ</b>	aged teak	+\$0
<b>40</b>	dark brown walnut	+\$0
<b>5K</b>	honey maple	+\$0
<b>2U</b>	light brown walnut	+\$0
<b>OZ</b>	medium cherry	+\$0
<b>UL</b>	natural maple	+\$0
<b>STP</b>	stain-to-match on maple (nonstandard)	+\$22
<b>WQT</b>	veneer quote option	+\$0
<b>UX</b>	walnut on cherry	+\$0

### Step 11. Laminate Top/Edge Finish

*For laminate top/edge (L)*

<b>HX</b>	aged cherry	+\$0
<b>2K</b>	aged teak	+\$0
<b>8D</b>	ash grey	+\$0
<b>BKN</b>	black	+\$0
<b>OW</b>	dark brown walnut	+\$0
<b>OX</b>	dark folkstone grey	+\$0
<b>1K</b>	dark khaki	+\$0
<b>OS</b>	dark sand	+\$0

## Terra Treatment Pre-configured Units

<b>0V</b>	dark sandstone	+\$0
<b>8Q</b>	folkstone grey	+\$0
<b>OG</b>	honey maple	+\$0
<b>LQT</b>	lamine quote option	+\$0
<b>76</b>	light brown walnut	+\$0
<b>OR</b>	light khaki	+\$0
<b>OU</b>	light sand	+\$0
<b>WY</b>	medium cherry	+\$0
<b>HM</b>	natural maple	+\$0
<b>WL</b>	sandstone	+\$0
<b>LU</b>	soft white	+\$0
<b>98</b>	studio white	+\$0
<b>HY</b>	walnut on cherry	+\$0
<b>91</b>	white	+\$0

**Step 11. Solid Surface Top/Edge Finish***For solid surface top/edge (K)*

<b>QB</b>	bisque	+\$0
<b>58</b>	cameo white	+\$0
<b>CQ</b>	glacier white	+\$0

**Step 12. 3form Finish***For fixed 3form screen (F) or adjustable 3form screen (A)*

<b>FHG</b>	hush gesso	+\$0
<b>FIW</b>	ion wheat	+\$0
<b>FPW</b>	varia pure white	+\$0

**Step 13. Pull Finish***For fixed 3form screen (F) or adjustable 3form screen (A)*

<b>QB</b>	bisque	+\$0
<b>58</b>	cameo white	+\$0
<b>CQ</b>	glacier white	+\$0

**Step 14. MicrobeCare Selection**

<b>MCN</b>	no MicrobeCare protection	+\$0
------------	---------------------------	------

Patient Chairs

Recliners

Rockers &amp; Gliders

Overbed Tables

Sleepover Seating

Casegoods

Accessories

## Terra Treatment Pre-configured Units



## Terra Single-Sided Unit, 82.5" Wide - Nurse Server and RSF Wardrobe

Weight: 319 lbs

	Price	Depth	Height
<i>List prices for base model</i>	\$3,758	18"	54"

## Step 1.

## TRA

## Step 2. Size

<b>106</b>	82.5" wide		+\$3758
------------	------------	--	---------

## Step 3. Case Material

<b>L</b>	laminate		+\$0
<b>W</b>	veneer		+\$683

## Step 4. Top Material

<b>L</b>	laminate top/edge		+\$0
<b>K</b>	solid surface top/edge		+\$874

## Step 5. Privacy Screen Material

For laminate (L)

<b>A</b>	adjustable 3form screen		+\$1092
<b>F</b>	fixed 3form screen		+\$602
<b>L</b>	laminate privacy panel		+\$0

For veneer (W)

<b>A</b>	adjustable 3form screen		+\$1092
<b>F</b>	fixed 3form screen		+\$602
<b>W</b>	wood privacy panel		+\$0

## Step 6. Lock Type for Drawers

<b>S</b>	lock on top nurse server drawer		+\$38
<b>N</b>	no lock		+\$0

## Step 7. Pull Type/Finish

<b>2C</b>	Bedford 2C chrome pull/finish		+\$0
<b>3C</b>	Bedford 3C chrome pull/finish		+\$0
<b>2</b>	Bedford brass pull/finish		+\$0
<b>3N</b>	Bedford brushed nickel pull/finish		+\$0
<b>13</b>	Cirrus espresso pull/finish		+\$0
<b>14</b>	Cirrus ice pull/finish		+\$0
<b>8</b>	Montello brushed nickel pull/finish		+\$0
<b>17</b>	Prague II nickel pull/finish		+\$0
<b>17R</b>	Prague II rubbed bronze pull/finish		+\$0
<b>10</b>	Pristo cloud pull/finish		+\$0
<b>11</b>	Pristo pewter pull/finish		+\$0
<b>12</b>	Pristo sable pull/finish		+\$0
<b>16</b>	Ten black contemporary pull/finish		+\$0
<b>19</b>	Terra steel pull/finish		+\$0

## Step 8. Lock Option

For lock on top nurse server drawer (S)

<b>KE</b>	keyed alike but each unit unique		+\$0
-----------	----------------------------------	--	------

## Step 9. Laminate Case Finish

For laminate (L) with laminate privacy panel (L), or fixed 3form screen (F), or adjustable 3form screen (A)

<b>HX</b>	aged cherry		+\$0
<b>2K</b>	aged teak		+\$0

<b>8D</b>	ash grey		+\$0
<b>BKN</b>	black		+\$0
<b>OW</b>	dark brown walnut		+\$0
<b>OX</b>	dark folkstone grey		+\$0
<b>1K</b>	dark khaki		+\$0
<b>OS</b>	dark sand		+\$0
<b>OV</b>	dark sandstone		+\$0
<b>8Q</b>	folkstone grey		+\$0
<b>OG</b>	honey maple		+\$0
<b>LQT</b>	laminate quote option		+\$0
<b>76</b>	light brown walnut		+\$0
<b>OR</b>	light khaki		+\$0
<b>OU</b>	light sand		+\$0
<b>WY</b>	medium cherry		+\$0
<b>HM</b>	natural maple		+\$0
<b>WL</b>	sandstone		+\$0
<b>LU</b>	soft white		+\$0
<b>98</b>	studio white		+\$0
<b>HY</b>	walnut on cherry		+\$0
<b>91</b>	white		+\$0

## Step 9. Wood Case Finish

For veneer (W) with wood privacy panel (W), or fixed 3form screen (F), or adjustable 3form screen (A)

<b>ED</b>	aged cherry		+\$0
<b>IZ</b>	aged teak		+\$0
<b>40</b>	dark brown walnut		+\$0
<b>5K</b>	honey maple		+\$0
<b>2U</b>	light brown walnut		+\$0
<b>OZ</b>	medium cherry		+\$0
<b>UL</b>	natural maple		+\$0
<b>STP</b>	stain-to-match on maple (nonstandard)		+\$22
<b>WQT</b>	veneer quote option		+\$0
<b>UX</b>	walnut on cherry		+\$0

## Step 10. Laminate Top/Edge Finish

For laminate top/edge (L)

<b>HX</b>	aged cherry		+\$0
<b>2K</b>	aged teak		+\$0
<b>8D</b>	ash grey		+\$0
<b>BKN</b>	black		+\$0
<b>OW</b>	dark brown walnut		+\$0
<b>OX</b>	dark folkstone grey		+\$0
<b>1K</b>	dark khaki		+\$0
<b>OS</b>	dark sand		+\$0
<b>OV</b>	dark sandstone		+\$0
<b>8Q</b>	folkstone grey		+\$0
<b>OG</b>	honey maple		+\$0
<b>LQT</b>	laminate quote option		+\$0
<b>76</b>	light brown walnut		+\$0
<b>OR</b>	light khaki		+\$0
<b>OU</b>	light sand		+\$0
<b>WY</b>	medium cherry		+\$0



## Terra Treatment Pre-configured Units

<b>HM</b>	natural maple	+\$0
<b>WL</b>	sandstone	+\$0
<b>LU</b>	soft white	+\$0
<b>98</b>	studio white	+\$0
<b>HY</b>	walnut on cherry	+\$0
<b>91</b>	white	+\$0

**Step 10. Solid Surface Top/Edge Finish***For solid surface top/edge (K)*

<b>QB</b>	bisque	+\$0
<b>58</b>	cameo white	+\$0
<b>CQ</b>	glacier white	+\$0

**Step 11. 3form Finish***For fixed 3form screen (F) or adjustable 3form screen (A)*

<b>FHG</b>	hush gesso	+\$0
<b>FIW</b>	ion wheat	+\$0
<b>FPW</b>	varia pure white	+\$0

**Step 12. Pull Finish***For fixed 3form screen (F) or adjustable 3form screen (A)*

<b>QB</b>	bisque	+\$0
<b>58</b>	cameo white	+\$0
<b>CQ</b>	glacier white	+\$0

**Step 13. MicrobeCare Selection**

<b>MCN</b>	no MicrobeCare protection	+\$0
------------	---------------------------	------

Patient Chairs

Recliners

Rockers &amp; Gliders

Overbed Tables

Sleepover Seating

Casegoods

Accessories

## Terra Treatment Pre-configured Units



## Terra Shared Unit, 82.5" Wide - Nurse Server and Wardrobe

Weight: 628 lbs

	Price	Depth	Height
<i>List prices for base model</i>	\$4,602	30"	54"

## Step 1.

## TRA

## Step 2. Size

<b>108</b>	82.5" wide		+\$4602
------------	------------	--	---------

## Step 3. Case Material

<b>L</b>	laminate		+\$0
<b>W</b>	veneer		+\$683

## Step 4. Top Material

<b>L</b>	laminate top/edge		+\$0
<b>K</b>	solid surface top/edge		+\$983

## Step 5. Privacy Screen Material

For laminate (L)

<b>A</b>	adjustable 3form screen		+\$1092
<b>F</b>	fixed 3form screen		+\$602
<b>L</b>	laminate privacy panel		+\$0

For veneer (W)

<b>A</b>	adjustable 3form screen		+\$1092
<b>F</b>	fixed 3form screen		+\$602
<b>W</b>	wood privacy panel		+\$0

## Step 6. Lock Type for Drawers

<b>S</b>	lock on top nurse server drawer		+\$38
<b>N</b>	no lock		+\$0

## Step 7. Pull Type/Finish

<b>2C</b>	Bedford 2C chrome pull/finish		+\$0
<b>3C</b>	Bedford 3C chrome pull/finish		+\$0
<b>2</b>	Bedford brass pull/finish		+\$0
<b>3N</b>	Bedford brushed nickel pull/finish		+\$0
<b>13</b>	Cirrus espresso pull/finish		+\$0
<b>14</b>	Cirrus ice pull/finish		+\$0
<b>8</b>	Montello brushed nickel pull/finish		+\$0
<b>17</b>	Prague II nickel pull/finish		+\$0
<b>17R</b>	Prague II rubbed bronze pull/finish		+\$0
<b>10</b>	Pristo cloud pull/finish		+\$0
<b>11</b>	Pristo pewter pull/finish		+\$0
<b>12</b>	Pristo sable pull/finish		+\$0
<b>16</b>	Ten black contemporary pull/finish		+\$0
<b>19</b>	Terra steel pull/finish		+\$0

## Step 8. Lock Option

For lock on top nurse server drawer (S)

<b>KE</b>	keyed alike but each unit unique		+\$0
-----------	----------------------------------	--	------

## Step 9. Laminate Case Finish

For laminate (L) with laminate privacy panel (L), or fixed 3form screen (F), or adjustable 3form screen (A)

<b>HX</b>	aged cherry		+\$0
<b>2K</b>	aged teak		+\$0

<b>8D</b>	ash grey		+\$0
<b>BKN</b>	black		+\$0
<b>OW</b>	dark brown walnut		+\$0
<b>OX</b>	dark folkstone grey		+\$0
<b>1K</b>	dark khaki		+\$0
<b>OS</b>	dark sand		+\$0
<b>OV</b>	dark sandstone		+\$0
<b>8Q</b>	folkstone grey		+\$0
<b>OG</b>	honey maple		+\$0
<b>LQT</b>	laminate quote option		+\$0
<b>76</b>	light brown walnut		+\$0
<b>OR</b>	light khaki		+\$0
<b>OU</b>	light sand		+\$0
<b>WY</b>	medium cherry		+\$0
<b>HM</b>	natural maple		+\$0
<b>WL</b>	sandstone		+\$0
<b>LU</b>	soft white		+\$0
<b>98</b>	studio white		+\$0
<b>HY</b>	walnut on cherry		+\$0
<b>91</b>	white		+\$0

## Step 9. Wood Case Finish

For veneer (W) with wood privacy panel (W), or fixed 3form screen (F), or adjustable 3form screen (A)

<b>ED</b>	aged cherry		+\$0
<b>IZ</b>	aged teak		+\$0
<b>40</b>	dark brown walnut		+\$0
<b>5K</b>	honey maple		+\$0
<b>2U</b>	light brown walnut		+\$0
<b>OZ</b>	medium cherry		+\$0
<b>UL</b>	natural maple		+\$0
<b>STP</b>	stain-to-match on maple (nonstandard)		+\$22
<b>WQT</b>	veneer quote option		+\$0
<b>UX</b>	walnut on cherry		+\$0

## Step 10. Laminate Top/Edge Finish

For laminate top/edge (L)

<b>HX</b>	aged cherry		+\$0
<b>2K</b>	aged teak		+\$0
<b>8D</b>	ash grey		+\$0
<b>BKN</b>	black		+\$0
<b>OW</b>	dark brown walnut		+\$0
<b>OX</b>	dark folkstone grey		+\$0
<b>1K</b>	dark khaki		+\$0
<b>OS</b>	dark sand		+\$0
<b>OV</b>	dark sandstone		+\$0
<b>8Q</b>	folkstone grey		+\$0
<b>OG</b>	honey maple		+\$0
<b>LQT</b>	laminate quote option		+\$0
<b>76</b>	light brown walnut		+\$0
<b>OR</b>	light khaki		+\$0
<b>OU</b>	light sand		+\$0
<b>WY</b>	medium cherry		+\$0

## Terra Treatment Pre-configured Units

<b>HM</b>	natural maple	+\$0
<b>WL</b>	sandstone	+\$0
<b>LU</b>	soft white	+\$0
<b>98</b>	studio white	+\$0
<b>HY</b>	walnut on cherry	+\$0
<b>91</b>	white	+\$0

**Step 10. Solid Surface Top/Edge Finish***For solid surface top/edge (K)*

<b>QB</b>	bisque	+\$0
<b>58</b>	cameo white	+\$0
<b>CQ</b>	glacier white	+\$0

**Step 11. 3form Finish***For fixed 3form screen (F) or adjustable 3form screen (A)*

<b>FHG</b>	hush gesso	+\$0
<b>FIW</b>	ion wheat	+\$0
<b>FPW</b>	varia pure white	+\$0

**Step 12. Pull Finish***For fixed 3form screen (F) or adjustable 3form screen (A)*

<b>QB</b>	bisque	+\$0
<b>58</b>	cameo white	+\$0
<b>CQ</b>	glacier white	+\$0

**Step 13. MicrobeCare Selection**

<b>MCN</b>	no MicrobeCare protection	+\$0
------------	---------------------------	------

Patient Chairs

Recliners

Rockers &amp; Gliders

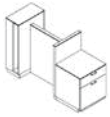
Overbed Tables

Sleepover Seating

Casegoods

Accessories

## Terra Treatment Pre-configured Units



## Terra Shared Unit, 82.5" Wide - Shared Nurse Server and One Drawer with Recycle Center

Weight: 548 lbs

	Price	Depth	Height
<i>List prices for base model</i>	\$3,433	30"	54"

## Step 1.

## TRA

## Step 2. Size

<b>109</b>	82.5" wide		+\$3433
------------	------------	--	---------

## Step 3. Case Material

<b>L</b>	laminate		+\$0
<b>W</b>	veneer		+\$683

## Step 4. Top Material

<b>L</b>	laminate top/edge		+\$0
<b>K</b>	solid surface top/edge		+\$983

## Step 5. Privacy Screen Material

For laminate (L)

<b>A</b>	adjustable 3form screen		+\$1092
<b>F</b>	fixed 3form screen		+\$602
<b>L</b>	laminate privacy panel		+\$0

For veneer (W)

<b>A</b>	adjustable 3form screen		+\$1092
<b>F</b>	fixed 3form screen		+\$602
<b>W</b>	wood privacy panel		+\$0

## Step 6. Lock Type for Drawers

<b>S</b>	lock on top nurse server drawer		+\$38
<b>N</b>	no lock		+\$0

## Step 7. Pull Type/Finish

<b>2C</b>	Bedford 2C chrome pull/finish		+\$0
<b>3C</b>	Bedford 3C chrome pull/finish		+\$0
<b>2</b>	Bedford brass pull/finish		+\$0
<b>3N</b>	Bedford brushed nickel pull/finish		+\$0
<b>13</b>	Cirrus espresso pull/finish		+\$0
<b>14</b>	Cirrus ice pull/finish		+\$0
<b>8</b>	Montello brushed nickel pull/finish		+\$0
<b>17</b>	Prague II nickel pull/finish		+\$0
<b>17R</b>	Prague II rubbed bronze pull/finish		+\$0
<b>10</b>	Pristo cloud pull/finish		+\$0
<b>11</b>	Pristo pewter pull/finish		+\$0
<b>12</b>	Pristo sable pull/finish		+\$0
<b>16</b>	Ten black contemporary pull/finish		+\$0
<b>19</b>	Terra steel pull/finish		+\$0

## Step 8. Lock Option

For lock on top nurse server drawer (S)

<b>KE</b>	keyed alike but each unit unique		+\$0
-----------	----------------------------------	--	------

## Step 9. Laminate Case Finish

For laminate (L) with laminate privacy panel (L), or fixed 3form screen (F), or adjustable 3form screen (A)

<b>HX</b>	aged cherry		+\$0
<b>2K</b>	aged teak		+\$0

<b>8D</b>	ash grey		+\$0
<b>BKN</b>	black		+\$0
<b>0W</b>	dark brown walnut		+\$0
<b>0X</b>	dark folkstone grey		+\$0
<b>1K</b>	dark khaki		+\$0
<b>0S</b>	dark sand		+\$0
<b>0V</b>	dark sandstone		+\$0
<b>8Q</b>	folkstone grey		+\$0
<b>OG</b>	honey maple		+\$0
<b>LQT</b>	laminate quote option		+\$0
<b>76</b>	light brown walnut		+\$0
<b>0R</b>	light khaki		+\$0
<b>0U</b>	light sand		+\$0
<b>WY</b>	medium cherry		+\$0
<b>HM</b>	natural maple		+\$0
<b>WL</b>	sandstone		+\$0
<b>LU</b>	soft white		+\$0
<b>98</b>	studio white		+\$0
<b>HY</b>	walnut on cherry		+\$0
<b>91</b>	white		+\$0

## Step 9. Wood Case Finish

For veneer (W) with wood privacy panel (W), or fixed 3form screen (F), or adjustable 3form screen (A)

<b>ED</b>	aged cherry		+\$0
<b>IZ</b>	aged teak		+\$0
<b>40</b>	dark brown walnut		+\$0
<b>5K</b>	honey maple		+\$0
<b>2U</b>	light brown walnut		+\$0
<b>0Z</b>	medium cherry		+\$0
<b>UL</b>	natural maple		+\$0
<b>STP</b>	stain-to-match on maple (nonstandard)		+\$22
<b>WQT</b>	veneer quote option		+\$0
<b>UX</b>	walnut on cherry		+\$0

## Step 10. Laminate Top/Edge Finish

For laminate top/edge (L)

<b>HX</b>	aged cherry		+\$0
<b>2K</b>	aged teak		+\$0
<b>8D</b>	ash grey		+\$0
<b>BKN</b>	black		+\$0
<b>0W</b>	dark brown walnut		+\$0
<b>0X</b>	dark folkstone grey		+\$0
<b>1K</b>	dark khaki		+\$0
<b>0S</b>	dark sand		+\$0
<b>0V</b>	dark sandstone		+\$0
<b>8Q</b>	folkstone grey		+\$0
<b>OG</b>	honey maple		+\$0
<b>LQT</b>	laminate quote option		+\$0
<b>76</b>	light brown walnut		+\$0
<b>0R</b>	light khaki		+\$0
<b>0U</b>	light sand		+\$0
<b>WY</b>	medium cherry		+\$0

## Terra Treatment Pre-configured Units

<b>HM</b>	natural maple	+\$0
<b>WL</b>	sandstone	+\$0
<b>LU</b>	soft white	+\$0
<b>98</b>	studio white	+\$0
<b>HY</b>	walnut on cherry	+\$0
<b>91</b>	white	+\$0

**Step 10. Solid Surface Top/Edge Finish***For solid surface top/edge (K)*

<b>QB</b>	bisque	+\$0
<b>58</b>	cameo white	+\$0
<b>CQ</b>	glacier white	+\$0

**Step 11. 3form Finish***For fixed 3form screen (F) or adjustable 3form screen (A)*

<b>FHG</b>	hush gesso	+\$0
<b>FIW</b>	ion wheat	+\$0
<b>FPW</b>	varia pure white	+\$0

**Step 12. Pull Finish***For fixed 3form screen (F) or adjustable 3form screen (A)*

<b>QB</b>	bisque	+\$0
<b>58</b>	cameo white	+\$0
<b>CQ</b>	glacier white	+\$0

**Step 13. MicrobeCare Selection**

<b>MCN</b>	no MicrobeCare protection	+\$0
------------	---------------------------	------

Patient Chairs

Recliners

Rockers &amp; Gliders

Overbed Tables

Sleepover Seating

Casegoods

Accessories

## Terra Treatment Pre-configured Units



## Terra Single-Sided Unit, 82.5" Wide - Nurse Server and LSF Wardrobe

Weight: 319 lbs

	Price	Depth	Height
<i>List prices for base model</i>	\$3,758	18"	54"

## Step 1.

## TRA

## Step 2. Size

<b>107</b>	82.5" wide		+\$3758
------------	------------	--	---------

## Step 3. Case Material

<b>L</b>	laminate		+\$0
<b>W</b>	veneer		+\$683

## Step 4. Top Material

<b>L</b>	laminate top/edge		+\$0
<b>K</b>	solid surface top/edge		+\$874

## Step 5. Privacy Screen Material

For laminate (L)

<b>A</b>	adjustable 3form screen		+\$1092
<b>F</b>	fixed 3form screen		+\$602
<b>L</b>	laminate privacy panel		+\$0

For veneer (W)

<b>A</b>	adjustable 3form screen		+\$1092
<b>F</b>	fixed 3form screen		+\$602
<b>W</b>	wood privacy panel		+\$0

## Step 6. Lock Type for Drawers

<b>S</b>	lock on top nurse server drawer		+\$38
<b>N</b>	no lock		+\$0

## Step 7. Pull Type/Finish

<b>2C</b>	Bedford 2C chrome pull/finish		+\$0
<b>3C</b>	Bedford 3C chrome pull/finish		+\$0
<b>2</b>	Bedford brass pull/finish		+\$0
<b>3N</b>	Bedford brushed nickel pull/finish		+\$0
<b>13</b>	Cirrus espresso pull/finish		+\$0
<b>14</b>	Cirrus ice pull/finish		+\$0
<b>8</b>	Montello brushed nickel pull/finish		+\$0
<b>17</b>	Prague II nickel pull/finish		+\$0
<b>17R</b>	Prague II rubbed bronze pull/finish		+\$0
<b>10</b>	Pristo cloud pull/finish		+\$0
<b>11</b>	Pristo pewter pull/finish		+\$0
<b>12</b>	Pristo sable pull/finish		+\$0
<b>16</b>	Ten black contemporary pull/finish		+\$0
<b>19</b>	Terra steel pull/finish		+\$0

## Step 8. Lock Option

For lock on top nurse server drawer (S)

<b>KE</b>	keyed alike but each unit unique		+\$0
-----------	----------------------------------	--	------

## Step 9. Laminate Case Finish

For laminate (L) with laminate privacy panel (L), or fixed 3form screen (F), or adjustable 3form screen (A)

<b>HX</b>	aged cherry		+\$0
<b>2K</b>	aged teak		+\$0

<b>8D</b>	ash grey		+\$0
<b>BKN</b>	black		+\$0
<b>OW</b>	dark brown walnut		+\$0
<b>OX</b>	dark folkstone grey		+\$0
<b>1K</b>	dark khaki		+\$0
<b>OS</b>	dark sand		+\$0
<b>OV</b>	dark sandstone		+\$0
<b>8Q</b>	folkstone grey		+\$0
<b>OG</b>	honey maple		+\$0
<b>LQT</b>	laminate quote option		+\$0
<b>76</b>	light brown walnut		+\$0
<b>OR</b>	light khaki		+\$0
<b>OU</b>	light sand		+\$0
<b>WY</b>	medium cherry		+\$0
<b>HM</b>	natural maple		+\$0
<b>WL</b>	sandstone		+\$0
<b>LU</b>	soft white		+\$0
<b>98</b>	studio white		+\$0
<b>HY</b>	walnut on cherry		+\$0
<b>91</b>	white		+\$0

## Step 9. Wood Case Finish

For veneer (W) with wood privacy panel (W), or fixed 3form screen (F), or adjustable 3form screen (A)

<b>ED</b>	aged cherry		+\$0
<b>IZ</b>	aged teak		+\$0
<b>40</b>	dark brown walnut		+\$0
<b>5K</b>	honey maple		+\$0
<b>2U</b>	light brown walnut		+\$0
<b>OZ</b>	medium cherry		+\$0
<b>UL</b>	natural maple		+\$0
<b>STP</b>	stain-to-match on maple (nonstandard)		+\$22
<b>WQT</b>	veneer quote option		+\$0
<b>UX</b>	walnut on cherry		+\$0

## Step 10. Laminate Top/Edge Finish

For laminate top/edge (L)

<b>HX</b>	aged cherry		+\$0
<b>2K</b>	aged teak		+\$0
<b>8D</b>	ash grey		+\$0
<b>BKN</b>	black		+\$0
<b>OW</b>	dark brown walnut		+\$0
<b>OX</b>	dark folkstone grey		+\$0
<b>1K</b>	dark khaki		+\$0
<b>OS</b>	dark sand		+\$0
<b>OV</b>	dark sandstone		+\$0
<b>8Q</b>	folkstone grey		+\$0
<b>OG</b>	honey maple		+\$0
<b>LQT</b>	laminate quote option		+\$0
<b>76</b>	light brown walnut		+\$0
<b>OR</b>	light khaki		+\$0
<b>OU</b>	light sand		+\$0
<b>WY</b>	medium cherry		+\$0

## Terra Treatment Pre-configured Units

<b>HM</b>	natural maple	+\$0
<b>WL</b>	sandstone	+\$0
<b>LU</b>	soft white	+\$0
<b>98</b>	studio white	+\$0
<b>HY</b>	walnut on cherry	+\$0
<b>91</b>	white	+\$0

**Step 10. Solid Surface Top/Edge Finish***For solid surface top/edge (K)*

<b>QB</b>	bisque	+\$0
<b>58</b>	cameo white	+\$0
<b>CQ</b>	glacier white	+\$0

**Step 11. 3form Finish***For fixed 3form screen (F) or adjustable 3form screen (A)*

<b>FHG</b>	hush gesso	+\$0
<b>FIW</b>	ion wheat	+\$0
<b>FPW</b>	varia pure white	+\$0

**Step 12. Pull Finish***For fixed 3form screen (F) or adjustable 3form screen (A)*

<b>QB</b>	bisque	+\$0
<b>58</b>	cameo white	+\$0
<b>CQ</b>	glacier white	+\$0

**Step 13. MicrobeCare Selection**

<b>MCN</b>	no MicrobeCare protection	+\$0
------------	---------------------------	------

Patient Chairs

Recliners

Rockers &amp; Gliders

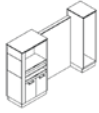
Overbed Tables

Sleepover Seating

Casegoods

Accessories

# Terra Treatment Pre-configured Units



## Terra Single-Sided Unit, 84" Wide - TV Cabinet, Desk and RSF Wardrobe

Weight: 380 lbs

	Price	Depth	Height
<i>List prices for base model</i>	\$3,825	18"	54"

### Step 1.

**TRA**

### Step 2. Size

**103** 84" wide +\$3825

### Step 3. Case Material

**L** laminate +\$0  
**W** veneer +\$683

### Step 4. Top Material

**L** laminate top/edge +\$0  
**K** solid surface top/edge +\$874

### Step 5. Privacy Screen Material

*For laminate (L)*

**A** adjustable 3form screen +\$1092  
**F** fixed 3form screen +\$602  
**L** laminate privacy panel +\$0

*For veneer (W)*

**A** adjustable 3form screen +\$1092  
**F** fixed 3form screen +\$602  
**W** wood privacy panel +\$0

### Step 6. Lock Type for Doors

**K** lock on droplid desk door +\$68  
**T** lock on TV cabinet doors +\$68  
**A** locks on TV cabinet doors and droplid desk door +\$136  
**N** no lock +\$0

### Step 7. Pull Type/Finish

**2C** Bedford 2C chrome pull/finish +\$0  
**3C** Bedford 3C chrome pull/finish +\$0  
**2** Bedford brass pull/finish +\$0  
**3N** Bedford brushed nickel pull/finish +\$0  
**13** Cirrus espresso pull/finish +\$0  
**14** Cirrus ice pull/finish +\$0  
**8** Montello brushed nickel pull/finish +\$0  
**17** Prague II nickel pull/finish +\$0  
**17R** Prague II rubbed bronze pull/finish +\$0  
**10** Prito cloud pull/finish +\$0  
**11** Prito pewter pull/finish +\$0  
**12** Prito sable pull/finish +\$0  
**16** Ten black contemporary pull/finish +\$0  
**19** Terra steel pull/finish +\$0

### Step 8. Lock Option

*For lock on TV cabinet doors (T), lock on droplid desk door (K), or locks on TV cabinet doors and droplid desk door (A)*

**KE** keyed alike but each unit unique +\$0

### Step 9. Power Outlets

**NPO** no power outlets +\$0  
**POS** power outlet behind lowest pullout shelf +\$271  
**POT** power outlet behind TV cabinet +\$271  
**POB** power outlets behind TV cabinet and pullout shelf +\$542

### Step 10. Desk Power Outlets

**NPD** no power and data +\$0  
**PDD** power outlet with two USB ports and CAT6 data in droplid desk +\$444

### Step 11. Laminate Case Finish

*For laminate (L) with laminate privacy panel (L), or fixed 3form screen (F), or adjustable 3form screen (A)*

**HX** aged cherry +\$0  
**2K** aged teak +\$0  
**8D** ash grey +\$0  
**BKN** black +\$0  
**0W** dark brown walnut +\$0  
**0X** dark folkstone grey +\$0  
**1K** dark khaki +\$0  
**0S** dark sand +\$0  
**0V** dark sandstone +\$0  
**8Q** folkstone grey +\$0  
**0G** honey maple +\$0  
**LQT** laminate quote option +\$0  
**76** light brown walnut +\$0  
**0R** light khaki +\$0  
**0U** light sand +\$0  
**WY** medium cherry +\$0  
**HM** natural maple +\$0  
**WL** sandstone +\$0  
**LU** soft white +\$0  
**98** studio white +\$0  
**HY** walnut on cherry +\$0  
**91** white +\$0

### Step 11. Wood Case Finish

*For veneer (W) with wood privacy panel (W), or fixed 3form screen (F), or adjustable 3form screen (A)*

**ED** aged cherry +\$0  
**IZ** aged teak +\$0  
**40** dark brown walnut +\$0  
**5K** honey maple +\$0  
**2U** light brown walnut +\$0  
**0Z** medium cherry +\$0  
**UL** natural maple +\$0  
**STP** stain-to-match on maple (nonstandard) +\$22  
**WQT** veneer quote option +\$0  
**UX** walnut on cherry +\$0



## Terra Treatment Pre-configured Units

**Step 12. Laminate Top/Edge Finish***For laminate top/edge (L)*

<b>HX</b>	aged cherry	+\$0
<b>2K</b>	aged teak	+\$0
<b>8D</b>	ash grey	+\$0
<b>BKN</b>	black	+\$0
<b>0W</b>	dark brown walnut	+\$0
<b>0X</b>	dark folkstone grey	+\$0
<b>1K</b>	dark khaki	+\$0
<b>0S</b>	dark sand	+\$0
<b>0V</b>	dark sandstone	+\$0
<b>8Q</b>	folkstone grey	+\$0
<b>OG</b>	honey maple	+\$0
<b>LQT</b>	laminate quote option	+\$0
<b>76</b>	light brown walnut	+\$0
<b>OR</b>	light khaki	+\$0
<b>OU</b>	light sand	+\$0
<b>WY</b>	medium cherry	+\$0
<b>HM</b>	natural maple	+\$0
<b>WL</b>	sandstone	+\$0
<b>LU</b>	soft white	+\$0
<b>98</b>	studio white	+\$0
<b>HY</b>	walnut on cherry	+\$0
<b>91</b>	white	+\$0

**Step 12. Solid Surface Top/Edge Finish***For solid surface top/edge (K)*

<b>QB</b>	bisque	+\$0
<b>58</b>	cameo white	+\$0
<b>CQ</b>	glacier white	+\$0

**Step 13. 3form Finish***For fixed 3form screen (F) or adjustable 3form screen (A)*

<b>FHG</b>	hush gesso	+\$0
<b>FIW</b>	ion wheat	+\$0
<b>FPW</b>	varia pure white	+\$0

**Step 14. Pull Finish***For fixed 3form screen (F) or adjustable 3form screen (A)*

<b>QB</b>	bisque	+\$0
<b>58</b>	cameo white	+\$0
<b>CQ</b>	glacier white	+\$0

**Step 15. MicrobeCare Selection**

<b>MCN</b>	no MicrobeCare protection	+\$0
------------	---------------------------	------

Patient Chairs

Recliners

Rockers &amp; Gliders

Overbed Tables

Sleepover Seating

Casegoods

Accessories

## Terra Treatment Pre-configured Units



### Terra Single-Sided Unit, 84" Wide - TV Cabinet, Desk and LSF Wardrobe

Weight: 380 lbs

	Price	Depth	Height
<i>List prices for base model</i>	\$3,825	18"	54"

#### Step 1.

**TRA**

#### Step 2. Size

**104** 84" wide +\$3825

#### Step 3. Case Material

**L** laminate +\$0  
**W** veneer +\$683

#### Step 4. Top Material

**L** laminate top/edge +\$0  
**K** solid surface top/edge +\$874

#### Step 5. Privacy Screen Material

*For laminate (L)*

**A** adjustable 3form screen +\$1092  
**F** fixed 3form screen +\$602  
**L** laminate privacy panel +\$0

*For veneer (W)*

**A** adjustable 3form screen +\$1092  
**F** fixed 3form screen +\$602  
**W** wood privacy panel +\$0

#### Step 6. Lock Type for Doors

**K** lock on droplid desk door +\$68  
**T** lock on TV cabinet doors +\$68  
**A** locks on TV cabinet doors and droplid desk door +\$136  
**N** no lock +\$0

#### Step 7. Pull Type/Finish

**2C** Bedford 2C chrome pull/finish +\$0  
**3C** Bedford 3C chrome pull/finish +\$0  
**2** Bedford brass pull/finish +\$0  
**3N** Bedford brushed nickel pull/finish +\$0  
**13** Cirrus espresso pull/finish +\$0  
**14** Cirrus ice pull/finish +\$0  
**8** Montello brushed nickel pull/finish +\$0  
**17** Prague II nickel pull/finish +\$0  
**17R** Prague II rubbed bronze pull/finish +\$0  
**10** Prito cloud pull/finish +\$0  
**11** Prito pewter pull/finish +\$0  
**12** Prito sable pull/finish +\$0  
**16** Ten black contemporary pull/finish +\$0  
**19** Terra steel pull/finish +\$0

#### Step 8. Lock Option

*For lock on TV cabinet doors (T), lock on droplid desk door (K), or locks on TV cabinet doors and droplid desk door (A)*

**KE** keyed alike but each unit unique +\$0

#### Step 9. Power Outlets

**NPO** no power outlets +\$0  
**POS** power outlet behind lowest pullout shelf +\$271  
**POT** power outlet behind TV cabinet +\$271  
**POB** power outlets behind TV cabinet and pullout shelf +\$542

#### Step 10. Desk Power Outlets

**NPD** no power and data +\$0  
**PDD** power outlet with two USB ports and CAT6 data in droplid desk +\$444

#### Step 11. Laminate Case Finish

*For laminate (L) with laminate privacy panel (L), or fixed 3form screen (F), or adjustable 3form screen (A)*

**HX** aged cherry +\$0  
**2K** aged teak +\$0  
**8D** ash grey +\$0  
**BKN** black +\$0  
**0W** dark brown walnut +\$0  
**0X** dark folkstone grey +\$0  
**1K** dark khaki +\$0  
**0S** dark sand +\$0  
**0V** dark sandstone +\$0  
**8Q** folkstone grey +\$0  
**0G** honey maple +\$0  
**LQT** laminate quote option +\$0  
**76** light brown walnut +\$0  
**0R** light khaki +\$0  
**0U** light sand +\$0  
**WY** medium cherry +\$0  
**HM** natural maple +\$0  
**WL** sandstone +\$0  
**LU** soft white +\$0  
**98** studio white +\$0  
**HY** walnut on cherry +\$0  
**91** white +\$0

#### Step 11. Wood Case Finish

*For veneer (W) with wood privacy panel (W), or fixed 3form screen (F), or adjustable 3form screen (A)*

**ED** aged cherry +\$0  
**IZ** aged teak +\$0  
**40** dark brown walnut +\$0  
**5K** honey maple +\$0  
**2U** light brown walnut +\$0  
**0Z** medium cherry +\$0  
**UL** natural maple +\$0  
**STP** stain-to-match on maple (nonstandard) +\$22  
**WQT** veneer quote option +\$0  
**UX** walnut on cherry +\$0

## Terra Treatment Pre-configured Units

**Step 12. Laminate Top/Edge Finish***For laminate top/edge (L)*

<b>HX</b>	aged cherry	+\$0
<b>2K</b>	aged teak	+\$0
<b>8D</b>	ash grey	+\$0
<b>BKN</b>	black	+\$0
<b>0W</b>	dark brown walnut	+\$0
<b>0X</b>	dark folkstone grey	+\$0
<b>1K</b>	dark khaki	+\$0
<b>0S</b>	dark sand	+\$0
<b>0V</b>	dark sandstone	+\$0
<b>8Q</b>	folkstone grey	+\$0
<b>OG</b>	honey maple	+\$0
<b>LQT</b>	laminate quote option	+\$0
<b>76</b>	light brown walnut	+\$0
<b>OR</b>	light khaki	+\$0
<b>OU</b>	light sand	+\$0
<b>WY</b>	medium cherry	+\$0
<b>HM</b>	natural maple	+\$0
<b>WL</b>	sandstone	+\$0
<b>LU</b>	soft white	+\$0
<b>98</b>	studio white	+\$0
<b>HY</b>	walnut on cherry	+\$0
<b>91</b>	white	+\$0

**Step 12. Solid Surface Top/Edge Finish***For solid surface top/edge (K)*

<b>QB</b>	bisque	+\$0
<b>58</b>	cameo white	+\$0
<b>CQ</b>	glacier white	+\$0

**Step 13. 3form Finish***For fixed 3form screen (F) or adjustable 3form screen (A)*

<b>FHG</b>	hush gesso	+\$0
<b>FIW</b>	ion wheat	+\$0
<b>FPW</b>	varia pure white	+\$0

**Step 14. Pull Finish***For fixed 3form screen (F) or adjustable 3form screen (A)*

<b>QB</b>	bisque	+\$0
<b>58</b>	cameo white	+\$0
<b>CQ</b>	glacier white	+\$0

**Step 15. MicrobeCare Selection**

<b>MCN</b>	no MicrobeCare protection	+\$0
------------	---------------------------	------

Patient Chairs

Recliners

Rockers &amp; Gliders

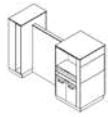
Overbed Tables

Sleepover Seating

Casegoods

Accessories

# Terra Treatment Pre-configured Units



## Terra Shared Unit, 84" Wide - TV Cabinet, Desk and Wardrobe

Weight: 671 lbs

	Price	Depth	Height
<i>List prices for base model</i>	\$5,337	30"	54"

### Step 1.

**TRA**

### Step 2. Size

**105** 84" wide +\$5337

### Step 3. Case Material

**L** laminate +\$0  
**W** veneer +\$683

### Step 4. Top Material

**L** laminate top/edge +\$0  
**K** solid surface top/edge +\$983

### Step 5. Privacy Screen Material

For laminate (L)

**A** adjustable 3form screen +\$1092  
**F** fixed 3form screen +\$602  
**L** laminate privacy panel +\$0

For veneer (W)

**A** adjustable 3form screen +\$1092  
**F** fixed 3form screen +\$602  
**W** wood privacy panel +\$0

### Step 6. Lock Type for Doors

**K** lock on droplid desk door +\$68  
**T** lock on TV cabinet doors +\$136  
**A** locks on TV cabinet doors and droplid desk door +\$204  
**N** no lock +\$0

### Step 7. Pull Type/Finish

**2C** Bedford 2C chrome pull/finish +\$0  
**3C** Bedford 3C chrome pull/finish +\$0  
**2** Bedford brass pull/finish +\$0  
**3N** Bedford brushed nickel pull/finish +\$0  
**13** Cirrus espresso pull/finish +\$0  
**14** Cirrus ice pull/finish +\$0  
**8** Montello brushed nickel pull/finish +\$0  
**17** Prague II nickel pull/finish +\$0  
**17R** Prague II rubbed bronze pull/finish +\$0  
**10** Prito cloud pull/finish +\$0  
**11** Prito pewter pull/finish +\$0  
**12** Prito sable pull/finish +\$0  
**16** Ten black contemporary pull/finish +\$0  
**19** Terra steel pull/finish +\$0

### Step 8. Lock Option

For lock on TV cabinet doors (T), lock on droplid desk door (K), or locks on TV cabinet doors and droplid desk door (A)

**KE** keyed alike but each unit unique +\$0

### Step 9. Power Outlets

**NPO** no power outlets +\$0  
**P2S** two power outlets behind lowest pullout shelf +\$542  
**P2T** two power outlets behind TV cabinet +\$542  
**P2B** two power outlets behind TV cabinet and two power outlets behind lowest pullout shelf +\$1084

### Step 10. Desk Power Outlets

**NPD** no power and data +\$0  
**P2D** power outlets with two USB ports and CAT6 data in droplid desks +\$444

### Step 11. Laminate Case Finish

For laminate (L) with laminate privacy panel (L), or fixed 3form screen (F), or adjustable 3form screen (A)

**HX** aged cherry +\$0  
**2K** aged teak +\$0  
**8D** ash grey +\$0  
**BKN** black +\$0  
**0W** dark brown walnut +\$0  
**0X** dark folkstone grey +\$0  
**1K** dark khaki +\$0  
**0S** dark sand +\$0  
**0V** dark sandstone +\$0  
**8Q** folkstone grey +\$0  
**0G** honey maple +\$0  
**LQT** laminate quote option +\$0  
**76** light brown walnut +\$0  
**0R** light khaki +\$0  
**0U** light sand +\$0  
**WY** medium cherry +\$0  
**HM** natural maple +\$0  
**WL** sandstone +\$0  
**LU** soft white +\$0  
**98** studio white +\$0  
**HY** walnut on cherry +\$0  
**91** white +\$0

### Step 11. Wood Case Finish

For veneer (W) with wood privacy panel (W), or fixed 3form screen (F), or adjustable 3form screen (A)

**ED** aged cherry +\$0  
**IZ** aged teak +\$0  
**40** dark brown walnut +\$0  
**5K** honey maple +\$0  
**2U** light brown walnut +\$0  
**0Z** medium cherry +\$0  
**UL** natural maple +\$0  
**STP** stain-to-match on maple (nonstandard) +\$22  
**WQT** veneer quote option +\$0  
**UX** walnut on cherry +\$0

## Terra Treatment Pre-configured Units

**Step 12. Laminate Top/Edge Finish***For laminate top/edge (L)*

<b>HX</b>	aged cherry	+\$0
<b>2K</b>	aged teak	+\$0
<b>8D</b>	ash grey	+\$0
<b>BKN</b>	black	+\$0
<b>0W</b>	dark brown walnut	+\$0
<b>0X</b>	dark folkstone grey	+\$0
<b>1K</b>	dark khaki	+\$0
<b>0S</b>	dark sand	+\$0
<b>0V</b>	dark sandstone	+\$0
<b>8Q</b>	folkstone grey	+\$0
<b>OG</b>	honey maple	+\$0
<b>LQT</b>	laminate quote option	+\$0
<b>76</b>	light brown walnut	+\$0
<b>OR</b>	light khaki	+\$0
<b>OU</b>	light sand	+\$0
<b>WY</b>	medium cherry	+\$0
<b>HM</b>	natural maple	+\$0
<b>WL</b>	sandstone	+\$0
<b>LU</b>	soft white	+\$0
<b>98</b>	studio white	+\$0
<b>HY</b>	walnut on cherry	+\$0
<b>91</b>	white	+\$0

**Step 12. Solid Surface Top/Edge Finish***For solid surface top/edge (K)*

<b>QB</b>	bisque	+\$0
<b>58</b>	cameo white	+\$0
<b>CQ</b>	glacier white	+\$0

**Step 13. 3form Finish***For fixed 3form screen (F) or adjustable 3form screen (A)*

<b>FHG</b>	hush gesso	+\$0
<b>FIW</b>	ion wheat	+\$0
<b>FPW</b>	varia pure white	+\$0

**Step 14. Pull Finish***For fixed 3form screen (F) or adjustable 3form screen (A)*

<b>QB</b>	bisque	+\$0
<b>58</b>	cameo white	+\$0
<b>CQ</b>	glacier white	+\$0

**Step 15. MicrobeCare Selection**

<b>MCN</b>	no MicrobeCare protection	+\$0
------------	---------------------------	------

Patient Chairs

Recliners

Rockers &amp; Gliders

Overbed Tables

Sleepover Seating

Casegoods

Accessories

# Terra Treatment Nurse Servers

## Terra Treatment Nurse Servers

### Standard Features

- Same standard as Terra Casegoods for Treatment Areas features, plus:
- Quiet, soft-closing drawers
- Hands-free waste disposal



### Terra Nurse Server, 18" Wide, with 35 Quart Waste Disposal

Weight: 160 lbs

	Price	Depth	Height
<i>List prices for base model</i>	\$1,832	25.75"	36"

#### Step 1.

#### TRA

#### Step 2. Size

**50** 18" wide +\$1832

#### Step 3. Case Material

**L** laminate +\$0  
**W** veneer +\$219

#### Step 4. Top Material

**L** laminate top/edge +\$0  
**K** solid surface top/edge +\$547

#### Step 5. Attachment Type

**F** freestanding +\$0  
**L** ganged LSF +\$0  
**R** ganged RSF +\$0

#### Step 6. Lock Type for Drawers

**S** lock on top nurse server drawer +\$38  
**N** no lock +\$0

#### Step 7. Pull Type/Finish

**2C** Bedford 2C chrome pull/finish +\$0  
**3C** Bedford 3C chrome pull/finish +\$0  
**2** Bedford brass pull/finish +\$0  
**3N** Bedford brushed nickel pull/finish +\$0  
**13** Cirrus espresso pull/finish +\$0  
**14** Cirrus ice pull/finish +\$0  
**8** Montello brushed nickel pull/finish +\$0  
**17** Prague II nickel pull/finish +\$0  
**17R** Prague II rubbed bronze pull/finish +\$0  
**10** Pristo cloud pull/finish +\$0  
**11** Pristo pewter pull/finish +\$0  
**12** Pristo sable pull/finish +\$0  
**16** Ten black contemporary pull/finish +\$0  
**19** Terra steel pull/finish +\$0

#### Step 8. Lock Option

*For lock on top nurse server drawer (S)*

**KE** keyed alike but each unit unique +\$0

#### Step 9. Laminate Case Finish

*For laminate (L)*

**HX** aged cherry +\$0  
**2K** aged teal +\$0  
**8D** ash grey +\$0  
**BKN** black +\$0  
**OW** dark brown walnut +\$0  
**OX** dark folkstone grey +\$0  
**1K** dark khaki +\$0  
**OS** dark sand +\$0  
**OV** dark sandstone +\$0  
**8Q** folkstone grey +\$0  
**OG** honey maple +\$0  
**LQT** laminate quote option +\$0  
**76** light brown walnut +\$0  
**OR** light khaki +\$0  
**OU** light sand +\$0  
**WY** medium cherry +\$0  
**HM** natural maple +\$0  
**WL** sandstone +\$0  
**LU** soft white +\$0  
**98** studio white +\$0  
**HY** walnut on cherry +\$0  
**91** white +\$0

#### Step 9. Wood Case Finish

*For veneer (W)*

**ED** aged cherry +\$0  
**IZ** aged teal +\$0  
**40** dark brown walnut +\$0  
**5K** honey maple +\$0  
**2U** light brown walnut +\$0  
**OZ** medium cherry +\$0  
**UL** natural maple +\$0  
**STP** stain-to-match on maple (nonstandard) +\$22  
**WQT** veneer quote option +\$0  
**UX** walnut on cherry +\$0

## Terra Treatment Nurse Servers

**Step 10. Laminate Top/Edge Finish***For laminate top/edge (L)*

<b>HX</b>	aged cherry	+\$0
<b>2K</b>	aged teak	+\$0
<b>8D</b>	ash grey	+\$0
<b>BKN</b>	black	+\$0
<b>0W</b>	dark brown walnut	+\$0
<b>0X</b>	dark folkstone grey	+\$0
<b>1K</b>	dark khaki	+\$0
<b>0S</b>	dark sand	+\$0
<b>0V</b>	dark sandstone	+\$0
<b>8Q</b>	folkstone grey	+\$0
<b>OG</b>	honey maple	+\$0
<b>LQT</b>	laminate quote option	+\$0
<b>76</b>	light brown walnut	+\$0
<b>OR</b>	light khaki	+\$0
<b>OU</b>	light sand	+\$0
<b>WY</b>	medium cherry	+\$0
<b>HM</b>	natural maple	+\$0
<b>WL</b>	sandstone	+\$0
<b>LU</b>	soft white	+\$0
<b>98</b>	studio white	+\$0
<b>HY</b>	walnut on cherry	+\$0
<b>91</b>	white	+\$0

**Step 10. Solid Surface Top/Edge Finish***For solid surface top/edge (K)*

<b>QB</b>	bisque	+\$0
<b>58</b>	cameo white	+\$0
<b>CQ</b>	glacier white	+\$0

**Step 11. MicrobeCare Selection**

<b>MCN</b>	no MicrobeCare protection	+\$0
------------	---------------------------	------

Patient Chairs

Recliners

Rockers &amp; Gliders

Overbed Tables

Sleepover Seating

Casegoods

Accessories

## Terra Treatment Nurse Servers



## Terra Shared Nurse Server, 29" Wide, with 35 Quart Waste Disposal

Weight: 320 lbs

	Price	Depth	Height
<i>List prices for base model</i>	\$2,291	25.75"	36"

## Step 1.

TRA

## Step 2. Size

52 29" wide +\$2291

## Step 3. Case Material

L laminate +\$0  
 W veneer +\$219

## Step 4. Top Material

L laminate top/edge +\$0  
 K solid surface top/edge +\$602

## Step 5. Attachment Type

F freestanding +\$0  
 L ganged LSF +\$0  
 R ganged RSF +\$0

## Step 6. Lock Type for Drawers

S lock on top nurse server drawer +\$38  
 N no lock +\$0

## Step 7. Pull Type/Finish

2C Bedford 2C chrome pull/finish +\$0  
 3C Bedford 3C chrome pull/finish +\$0  
 2 Bedford brass pull/finish +\$0  
 3N Bedford brushed nickel pull/finish +\$0  
 13 Cirrus espresso pull/finish +\$0  
 14 Cirrus ice pull/finish +\$0  
 8 Montello brushed nickel pull/finish +\$0  
 17 Prague II nickel pull/finish +\$0  
 17R Prague II rubbed bronze pull/finish +\$0  
 10 Pristo cloud pull/finish +\$0  
 11 Pristo pewter pull/finish +\$0  
 12 Pristo sable pull/finish +\$0  
 16 Ten black contemporary pull/finish +\$0  
 19 Terra steel pull/finish +\$0

## Step 8. Lock Option

*For lock on top nurse server drawer (S)*

KE keyed alike but each unit unique +\$0

## Step 9. Laminate Case Finish

*For laminate (L)*

HX aged cherry +\$0  
 2K aged teak +\$0  
 8D ash grey +\$0  
 BKN black +\$0  
 OW dark brown walnut +\$0  
 OX dark folkstone grey +\$0  
 1K dark khaki +\$0  
 OS dark sand +\$0  
 OV dark sandstone +\$0

8Q folkstone grey +\$0  
 OG honey maple +\$0  
 LQT laminate quote option +\$0  
 76 light brown walnut +\$0  
 OR light khaki +\$0  
 OU light sand +\$0  
 WY medium cherry +\$0  
 HM natural maple +\$0  
 WL sandstone +\$0  
 LU soft white +\$0  
 98 studio white +\$0  
 HY walnut on cherry +\$0  
 91 white +\$0

## Step 9. Wood Case Finish

*For veneer (W)*

ED aged cherry +\$0  
 IZ aged teak +\$0  
 40 dark brown walnut +\$0  
 5K honey maple +\$0  
 2U light brown walnut +\$0  
 OZ medium cherry +\$0  
 UL natural maple +\$0  
 STP stain-to-match on maple (nonstandard) +\$22  
 WQT veneer quote option +\$0  
 UX walnut on cherry +\$0

## Step 10. Laminate Top/Edge Finish

*For laminate top/edge (L)*

HX aged cherry +\$0  
 2K aged teak +\$0  
 8D ash grey +\$0  
 BKN black +\$0  
 OW dark brown walnut +\$0  
 OX dark folkstone grey +\$0  
 1K dark khaki +\$0  
 OS dark sand +\$0  
 OV dark sandstone +\$0  
 8Q folkstone grey +\$0  
 OG honey maple +\$0  
 LQT laminate quote option +\$0  
 76 light brown walnut +\$0  
 OR light khaki +\$0  
 OU light sand +\$0  
 WY medium cherry +\$0  
 HM natural maple +\$0  
 WL sandstone +\$0  
 LU soft white +\$0  
 98 studio white +\$0  
 HY walnut on cherry +\$0  
 91 white +\$0



## Terra Treatment Nurse Servers

### Step 10. Solid Surface Top/Edge Finish

*For solid surface top/edge (K)*

<b>QB</b>	bisque	+\$0
<b>58</b>	cameo white	+\$0
<b>CQ</b>	glacier white	+\$0

### Step 11. MicrobeCare Selection

<b>MCN</b>	no MicrobeCare protection	+\$0
------------	---------------------------	------

Patient Chairs

Recliners

Rockers &amp; Gliders

Overbed Tables

Sleepover Seating

Casegoods

Accessories

## Terra Treatment Nurse Servers



## Terra Shared Nurse Server, 29" Wide, with Recycling Containers

Weight: 400 lbs

	Price	Depth	Height
<i>List prices for base model</i>	\$2,129	25.75"	36"

## Step 1.

TRA

## Step 2. Size

53 29" wide +\$2129

## Step 3. Case Material

L laminate +\$0  
 W veneer +\$219

## Step 4. Top Material

L laminate top/edge +\$0  
 K solid surface top/edge +\$602

## Step 5. Attachment Type

F freestanding +\$0  
 L ganged LSF +\$0  
 R ganged RSF +\$0

## Step 6. Lock Type for Drawers

S lock on top nurse server drawer +\$38  
 N no lock +\$0

## Step 7. Pull Type/Finish

2C Bedford 2C chrome pull/finish +\$0  
 3C Bedford 3C chrome pull/finish +\$0  
 2 Bedford brass pull/finish +\$0  
 3N Bedford brushed nickel pull/finish +\$0  
 13 Cirrus espresso pull/finish +\$0  
 14 Cirrus ice pull/finish +\$0  
 8 Montello brushed nickel pull/finish +\$0  
 17 Prague II nickel pull/finish +\$0  
 17R Prague II rubbed bronze pull/finish +\$0  
 10 Pristo cloud pull/finish +\$0  
 11 Pristo pewter pull/finish +\$0  
 12 Pristo sable pull/finish +\$0  
 16 Ten black contemporary pull/finish +\$0  
 19 Terra steel pull/finish +\$0

## Step 8. Lock Option

*For lock on top nurse server drawer (S)*

KE keyed alike but each unit unique +\$0

## Step 9. Laminate Case Finish

*For laminate (L)*

HX aged cherry +\$0  
 2K aged teak +\$0  
 8D ash grey +\$0  
 BKN black +\$0  
 OW dark brown walnut +\$0  
 OX dark folkstone grey +\$0  
 1K dark khaki +\$0  
 OS dark sand +\$0  
 OV dark sandstone +\$0

8Q folkstone grey +\$0  
 OG honey maple +\$0  
 LQT laminate quote option +\$0  
 76 light brown walnut +\$0  
 OR light khaki +\$0  
 OU light sand +\$0  
 WY medium cherry +\$0  
 HM natural maple +\$0  
 WL sandstone +\$0  
 LU soft white +\$0  
 98 studio white +\$0  
 HY walnut on cherry +\$0  
 91 white +\$0

## Step 9. Wood Case Finish

*For veneer (W)*

ED aged cherry +\$0  
 IZ aged teak +\$0  
 40 dark brown walnut +\$0  
 5K honey maple +\$0  
 2U light brown walnut +\$0  
 OZ medium cherry +\$0  
 UL natural maple +\$0  
 STP stain-to-match on maple (nonstandard) +\$22  
 WQT veneer quote option +\$0  
 UX walnut on cherry +\$0

## Step 10. Laminate Top/Edge Finish

*For laminate top/edge (L)*

HX aged cherry +\$0  
 2K aged teak +\$0  
 8D ash grey +\$0  
 BKN black +\$0  
 OW dark brown walnut +\$0  
 OX dark folkstone grey +\$0  
 1K dark khaki +\$0  
 OS dark sand +\$0  
 OV dark sandstone +\$0  
 8Q folkstone grey +\$0  
 OG honey maple +\$0  
 LQT laminate quote option +\$0  
 76 light brown walnut +\$0  
 OR light khaki +\$0  
 OU light sand +\$0  
 WY medium cherry +\$0  
 HM natural maple +\$0  
 WL sandstone +\$0  
 LU soft white +\$0  
 98 studio white +\$0  
 HY walnut on cherry +\$0  
 91 white +\$0

## Terra Treatment Nurse Servers

### Step 10. Solid Surface Top/Edge Finish

*For solid surface top/edge (K)*

<b>QB</b>	bisque	+\$0
<b>58</b>	cameo white	+\$0
<b>CQ</b>	glacier white	+\$0

### Step 11. MicrobeCare Selection

<b>MCN</b>	no MicrobeCare protection	+\$0
------------	---------------------------	------

Patient Chairs

Recliners

Rockers &amp; Gliders

Overbed Tables

Sleepover Seating

Casegoods

Accessories

# Terra Treatment TV Cabinets

## Terra Treatment TV Cabinets

### Standard Features

- Same standard as Terra Casegoods for Treatment Areas features.



### Terra TV Cabinet, 27.75" Wide

Weight: 186 lbs

	Price	Depth	Height
<i>List prices for base model</i>	\$1,674	18"	54"

#### Step 1.

**TRA**

#### Step 2. Size

**59** 27.75" wide +\$1674

#### Step 3. Case Material

**L** laminate +\$0  
**W** veneer +\$328

#### Step 4. Top Material

**L** laminate top/edge +\$0  
**K** solid surface top/edge +\$438

#### Step 5. Attachment Type

**F** freestanding +\$0  
**L** ganged LSF +\$0  
**R** ganged RSF +\$0

#### Step 6. Lock Type for Doors

**T** lock on TV cabinet doors +\$68  
**N** no lock +\$0

#### Step 7. Pull Type/Finish

**2C** Bedford 2C chrome pull/finish +\$0  
**3C** Bedford 3C chrome pull/finish +\$0  
**2** Bedford brass pull/finish +\$0  
**3N** Bedford brushed nickel pull/finish +\$0  
**13** Cirrus espresso pull/finish +\$0  
**14** Cirrus ice pull/finish +\$0  
**8** Montello brushed nickel pull/finish +\$0  
**17** Prague II nickel pull/finish +\$0  
**17R** Prague II rubbed bronze pull/finish +\$0  
**10** Pristo cloud pull/finish +\$0  
**11** Pristo pewter pull/finish +\$0  
**12** Pristo sable pull/finish +\$0  
**16** Ten black contemporary pull/finish +\$0  
**19** Terra steel pull/finish +\$0

#### Step 8. Lock Option

*For lock on TV cabinet doors (T)*

**KE** keyed alike but each unit unique +\$0

#### Step 9. Power Outlets

**NPO** no power outlets +\$0  
**POS** power outlet behind lowest pullout shelf +\$271  
**POT** power outlet behind TV cabinet +\$271  
**POB** power outlets behind TV cabinet and pullout shelf +\$542

#### Step 10. Laminate Case Finish

*For laminate (L)*

**HX** aged cherry +\$0  
**2K** aged teak +\$0  
**8D** ash grey +\$0  
**BKN** black +\$0  
**OW** dark brown walnut +\$0  
**OX** dark folkstone grey +\$0  
**1K** dark khaki +\$0  
**OS** dark sand +\$0  
**OV** dark sandstone +\$0  
**8Q** folkstone grey +\$0  
**OG** honey maple +\$0  
**LQT** laminate quote option +\$0  
**76** light brown walnut +\$0  
**OR** light khaki +\$0  
**OU** light sand +\$0  
**WY** medium cherry +\$0  
**HM** natural maple +\$0  
**WL** sandstone +\$0  
**LU** soft white +\$0  
**98** studio white +\$0  
**HY** walnut on cherry +\$0  
**91** white +\$0

#### Step 10. Wood Case Finish

*For veneer (W)*

**ED** aged cherry +\$0  
**IZ** aged teak +\$0  
**40** dark brown walnut +\$0  
**5K** honey maple +\$0  
**2U** light brown walnut +\$0  
**OZ** medium cherry +\$0  
**UL** natural maple +\$0  
**STP** stain-to-match on maple (nonstandard) +\$22  
**WQT** veneer quote option +\$0  
**UX** walnut on cherry +\$0

#### Step 11. Laminate Top/Edge Finish

*For laminate top/edge (L)*

**HX** aged cherry +\$0  
**2K** aged teak +\$0  
**8D** ash grey +\$0  
**BKN** black +\$0  
**OW** dark brown walnut +\$0  
**OX** dark folkstone grey +\$0

## Terra Treatment TV Cabinets

<b>1K</b>	dark khaki	+\$0
<b>0S</b>	dark sand	+\$0
<b>0V</b>	dark sandstone	+\$0
<b>8Q</b>	folkstone grey	+\$0
<b>0G</b>	honey maple	+\$0
<b>LQT</b>	laminate quote option	+\$0
<b>76</b>	light brown walnut	+\$0
<b>0R</b>	light khaki	+\$0
<b>0U</b>	light sand	+\$0
<b>WY</b>	medium cherry	+\$0
<b>HM</b>	natural maple	+\$0
<b>WL</b>	sandstone	+\$0
<b>LU</b>	soft white	+\$0
<b>98</b>	studio white	+\$0
<b>HY</b>	walnut on cherry	+\$0
<b>91</b>	white	+\$0

**Step 11. Solid Surface Top/Edge Finish***For solid surface top/edge (K)*

<b>QB</b>	bisque	+\$0
<b>58</b>	cameo white	+\$0
<b>CQ</b>	glacier white	+\$0

**Step 12. MicrobeCare Selection**

<b>MCN</b>	no MicrobeCare protection	+\$0
------------	---------------------------	------

Patient Chairs

Recliners

Rockers &amp; Gliders

Overbed Tables

Sleepover Seating

Casegoods

Accessories

## Terra Treatment TV Cabinets



## Terra Shared TV Cabinet, 25.75" Wide

Weight: 372 lbs

	Price	Depth	Height
<i>List prices for base model</i>	\$2,701	29.75"	54"

## Step 1.

**TRA**

## Step 2. Size

**63** 25.75" wide +\$2701

## Step 3. Case Material

**L** laminate +\$0  
**W** veneer +\$328

## Step 4. Top Material

**L** laminate top/edge +\$0  
**K** solid surface top/edge +\$547

## Step 5. Attachment Type

**F** freestanding +\$0  
**L** ganged LSF +\$0  
**R** ganged RSF +\$0

## Step 6. Lock Type for Doors

**T** lock on TV cabinet doors +\$136  
**N** no lock +\$0

## Step 7. Pull Type/Finish

**2C** Bedford 2C chrome pull/finish +\$0  
**3C** Bedford 3C chrome pull/finish +\$0  
**2** Bedford brass pull/finish +\$0  
**3N** Bedford brushed nickel pull/finish +\$0  
**13** Cirrus espresso pull/finish +\$0  
**14** Cirrus ice pull/finish +\$0  
**8** Montello brushed nickel pull/finish +\$0  
**17** Prague II nickel pull/finish +\$0  
**17R** Prague II rubbed bronze pull/finish +\$0  
**10** Prito cloud pull/finish +\$0  
**11** Prito pewter pull/finish +\$0  
**12** Prito sable pull/finish +\$0  
**16** Ten black contemporary pull/finish +\$0  
**19** Terra steel pull/finish +\$0

## Step 8. Lock Option

*For lock on TV cabinet doors (T)***KE** keyed alike but each unit unique +\$0

## Step 9. Power Outlets

**NPO** no power outlets +\$0  
**P2S** two power outlets behind lowest pullout shelf +\$542  
**P2T** two power outlets behind TV cabinet +\$542  
**P2B** two power outlets behind TV cabinet and two power outlets behind lowest pullout shelf +\$1084

## Step 10. Laminate Case Finish

*For laminate (L)*

**HX** aged cherry +\$0  
**2K** aged teak +\$0

**8D** ash grey +\$0  
**BKN** black +\$0  
**OW** dark brown walnut +\$0  
**OX** dark folkstone grey +\$0  
**1K** dark khaki +\$0  
**OS** dark sand +\$0  
**OV** dark sandstone +\$0  
**8Q** folkstone grey +\$0  
**OG** honey maple +\$0  
**LQT** laminate quote option +\$0  
**76** light brown walnut +\$0  
**OR** light khaki +\$0  
**OU** light sand +\$0  
**WY** medium cherry +\$0  
**HM** natural maple +\$0  
**WL** sandstone +\$0  
**LU** soft white +\$0  
**98** studio white +\$0  
**HY** walnut on cherry +\$0  
**91** white +\$0

## Step 10. Wood Case Finish

*For veneer (W)*

**ED** aged cherry +\$0  
**IZ** aged teak +\$0  
**40** dark brown walnut +\$0  
**5K** honey maple +\$0  
**2U** light brown walnut +\$0  
**OZ** medium cherry +\$0  
**UL** natural maple +\$0  
**STP** stain-to-match on maple (nonstandard) +\$22  
**WQT** veneer quote option +\$0  
**UX** walnut on cherry +\$0

## Step 11. Laminate Top/Edge Finish

*For laminate top/edge (L)*

**HX** aged cherry +\$0  
**2K** aged teak +\$0  
**8D** ash grey +\$0  
**BKN** black +\$0  
**OW** dark brown walnut +\$0  
**OX** dark folkstone grey +\$0  
**1K** dark khaki +\$0  
**OS** dark sand +\$0  
**OV** dark sandstone +\$0  
**8Q** folkstone grey +\$0  
**OG** honey maple +\$0  
**LQT** laminate quote option +\$0  
**76** light brown walnut +\$0  
**OR** light khaki +\$0  
**OU** light sand +\$0  
**WY** medium cherry +\$0  
**HM** natural maple +\$0

## Terra Treatment TV Cabinets

<b>WL</b>	sandstone	+\$0
<b>LU</b>	soft white	+\$0
<b>98</b>	studio white	+\$0
<b>HY</b>	walnut on cherry	+\$0
<b>91</b>	white	+\$0

**Step 11. Solid Surface Top/Edge Finish***For solid surface top/edge (K)*

<b>QB</b>	bisque	+\$0
<b>58</b>	cameo white	+\$0
<b>CQ</b>	glacier white	+\$0

**Step 12. MicrobeCare Selection**

<b>MCN</b>	no MicrobeCare protection	+\$0
------------	---------------------------	------

Patient Chairs

Recliners

Rockers &amp; Gliders

Overbed Tables

Sleepover Seating

Casegoods

Accessories

## Terra Treatment TV Cabinets



## Terra TV Cabinet with Desk, 29" Wide

Weight: 221 lbs

	Price	Depth	Height
<i>List prices for base model</i>	\$1,899	18"	54"

## Step 1.

## TRA

## Step 2. Size

<b>61</b>	29" wide	+\$1899
-----------	----------	---------

## Step 3. Case Material

<b>L</b>	laminate	+\$0
<b>W</b>	veneer	+\$328

## Step 4. Top Material

<b>L</b>	laminate top/edge	+\$0
<b>K</b>	solid surface top/edge	+\$602

## Step 5. Attachment Type

<b>G</b>	freestanding with drop down lid LSF	+\$0
<b>F</b>	freestanding with drop down lid RSF	+\$0
<b>L</b>	ganged LSF with drop down lid RSF	+\$0
<b>R</b>	ganged RSF with drop down lid LSF	+\$0

## Step 6. Lock Type for Doors

<b>K</b>	lock on droplid desk door	+\$68
<b>T</b>	lock on TV cabinet doors	+\$68
<b>A</b>	locks on TV cabinet doors and droplid desk door	+\$136
<b>N</b>	no lock	+\$0

## Step 7. Pull Type/Finish

<b>2C</b>	Bedford 2C chrome pull/finish	+\$0
<b>3C</b>	Bedford 3C chrome pull/finish	+\$0
<b>2</b>	Bedford brass pull/finish	+\$0
<b>3N</b>	Bedford brushed nickel pull/finish	+\$0
<b>13</b>	Cirrus espresso pull/finish	+\$0
<b>14</b>	Cirrus ice pull/finish	+\$0
<b>8</b>	Montello brushed nickel pull/finish	+\$0
<b>17</b>	Prague II nickel pull/finish	+\$0
<b>17R</b>	Prague II rubbed bronze pull/finish	+\$0
<b>10</b>	Pristo cloud pull/finish	+\$0
<b>11</b>	Pristo pewter pull/finish	+\$0
<b>12</b>	Pristo sable pull/finish	+\$0
<b>16</b>	Ten black contemporary pull/finish	+\$0
<b>19</b>	Terra steel pull/finish	+\$0

## Step 8. Lock Option

For lock on TV cabinet doors (T), lock on droplid desk door (K), or locks on TV cabinet doors and droplid desk door (A)

<b>KE</b>	keyed alike but each unit unique	+\$0
-----------	----------------------------------	------

## Step 9. Power Outlets

<b>NPO</b>	no power outlets	+\$0
<b>POS</b>	power outlet behind lowest pullout shelf	+\$271
<b>POT</b>	power outlet behind TV cabinet	+\$271
<b>POB</b>	power outlets behind TV cabinet and pullout shelf	+\$542

## Step 10. Desk Power Outlets

<b>NPD</b>	no power and data	+\$0
------------	-------------------	------

<b>PDD</b>	power outlet with two USB ports and CAT6 data in droplid desk	+\$444
------------	---------------------------------------------------------------	--------

## Step 11. Laminate Case Finish

For laminate (L)

<b>HX</b>	aged cherry	+\$0
<b>2K</b>	aged teak	+\$0
<b>8D</b>	ash grey	+\$0
<b>BKN</b>	black	+\$0
<b>OW</b>	dark brown walnut	+\$0
<b>OX</b>	dark folkstone grey	+\$0
<b>1K</b>	dark khaki	+\$0
<b>OS</b>	dark sand	+\$0
<b>OV</b>	dark sandstone	+\$0
<b>8Q</b>	folkstone grey	+\$0
<b>OG</b>	honey maple	+\$0
<b>LQT</b>	laminate quote option	+\$0
<b>76</b>	light brown walnut	+\$0
<b>OR</b>	light khaki	+\$0
<b>OU</b>	light sand	+\$0
<b>WY</b>	medium cherry	+\$0
<b>HM</b>	natural maple	+\$0
<b>WL</b>	sandstone	+\$0
<b>LU</b>	soft white	+\$0
<b>98</b>	studio white	+\$0
<b>HY</b>	walnut on cherry	+\$0
<b>91</b>	white	+\$0

## Step 11. Wood Case Finish

For veneer (W)

<b>ED</b>	aged cherry	+\$0
<b>IZ</b>	aged teak	+\$0
<b>40</b>	dark brown walnut	+\$0
<b>5K</b>	honey maple	+\$0
<b>2U</b>	light brown walnut	+\$0
<b>OZ</b>	medium cherry	+\$0
<b>UL</b>	natural maple	+\$0
<b>STP</b>	stain-to-match on maple (nonstandard)	+\$22
<b>WQT</b>	veneer quote option	+\$0
<b>UX</b>	walnut on cherry	+\$0

## Step 12. Laminate Top/Edge Finish

For laminate top/edge (L)

<b>HX</b>	aged cherry	+\$0
<b>2K</b>	aged teak	+\$0
<b>8D</b>	ash grey	+\$0
<b>BKN</b>	black	+\$0
<b>OW</b>	dark brown walnut	+\$0
<b>OX</b>	dark folkstone grey	+\$0
<b>1K</b>	dark khaki	+\$0
<b>OS</b>	dark sand	+\$0
<b>OV</b>	dark sandstone	+\$0
<b>8Q</b>	folkstone grey	+\$0



## Terra Treatment TV Cabinets

<b>OG</b>	honey maple	+\$0
<b>LQT</b>	laminated quote option	+\$0
<b>76</b>	light brown walnut	+\$0
<b>OR</b>	light khaki	+\$0
<b>OU</b>	light sand	+\$0
<b>WY</b>	medium cherry	+\$0
<b>HM</b>	natural maple	+\$0
<b>WL</b>	sandstone	+\$0
<b>LU</b>	soft white	+\$0
<b>98</b>	studio white	+\$0
<b>HY</b>	walnut on cherry	+\$0
<b>91</b>	white	+\$0

**Step 12. Solid Surface Top/Edge Finish***For solid surface top/edge (K)*

<b>QB</b>	bisque	+\$0
<b>58</b>	cameo white	+\$0
<b>CQ</b>	glacier white	+\$0

**Step 13. MicrobeCare Selection**

<b>MCN</b>	no MicrobeCare protection	+\$0
------------	---------------------------	------

Patient Chairs

Recliners

Rockers &amp; Gliders

Overbed Tables

Sleepover Seating

Casegoods

Accessories

## Terra Treatment TV Cabinets



## Terra Shared TV Cabinet with Desk, 29" Wide

Weight: 443 lbs

	Price	Depth	Height
<i>List prices for base model</i>	\$3,024	29.75"	54"

## Step 1.

## TRA

## Step 2. Size

<b>64</b>	29" wide	+ \$3024
-----------	----------	----------

## Step 3. Case Material

<b>L</b>	laminate	+\$0
<b>W</b>	veneer	+\$328

## Step 4. Top Material

<b>L</b>	laminate top/edge	+\$0
<b>K</b>	solid surface top/edge	+\$602

## Step 5. Attachment Type

<b>F</b>	freestanding	+\$0
<b>L</b>	ganged LSF	+\$0
<b>R</b>	ganged RSF	+\$0

## Step 6. Lock Type for Doors

<b>K</b>	lock on droplid desk door	+\$68
<b>T</b>	lock on TV cabinet doors	+\$136
<b>A</b>	locks on TV cabinet doors and droplid desk door	+\$204
<b>N</b>	no lock	+\$0

## Step 7. Pull Type/Finish

<b>2C</b>	Bedford 2C chrome pull/finish	+\$0
<b>3C</b>	Bedford 3C chrome pull/finish	+\$0
<b>2</b>	Bedford brass pull/finish	+\$0
<b>3N</b>	Bedford brushed nickel pull/finish	+\$0
<b>13</b>	Cirrus espresso pull/finish	+\$0
<b>14</b>	Cirrus ice pull/finish	+\$0
<b>8</b>	Montello brushed nickel pull/finish	+\$0
<b>17</b>	Prague II nickel pull/finish	+\$0
<b>17R</b>	Prague II rubbed bronze pull/finish	+\$0
<b>10</b>	Pristo cloud pull/finish	+\$0
<b>11</b>	Pristo pewter pull/finish	+\$0
<b>12</b>	Pristo sable pull/finish	+\$0
<b>16</b>	Ten black contemporary pull/finish	+\$0
<b>19</b>	Terra steel pull/finish	+\$0

## Step 8. Lock Option

For lock on TV cabinet doors (T), lock on droplid desk door (K), or locks on TV cabinet doors and droplid desk door (A)

<b>KE</b>	keyed alike but each unit unique	+\$0
-----------	----------------------------------	------

## Step 9. Power Outlets

<b>NPO</b>	no power outlets	+\$0
<b>P2S</b>	two power outlets behind lowest pullout shelf	+\$542
<b>P2T</b>	two power outlets behind TV cabinet	+\$542
<b>P2B</b>	two power outlets behind TV cabinet and two power outlets behind lowest pullout shelf	+\$1084

## Step 10. Desk Power Outlets

<b>NPD</b>	no power and data	+\$0
------------	-------------------	------

<b>P2D</b>	power outlets with two USB ports and CAT6 data in droplid desks	+\$444
------------	-----------------------------------------------------------------	--------

## Step 11. Laminate Case Finish

For laminate (L)

<b>HX</b>	aged cherry	+\$0
<b>2K</b>	aged teak	+\$0
<b>8D</b>	ash grey	+\$0
<b>BKN</b>	black	+\$0
<b>0W</b>	dark brown walnut	+\$0
<b>0X</b>	dark folkstone grey	+\$0
<b>1K</b>	dark khaki	+\$0
<b>0S</b>	dark sand	+\$0
<b>0V</b>	dark sandstone	+\$0
<b>8Q</b>	folkstone grey	+\$0
<b>0G</b>	honey maple	+\$0
<b>LQT</b>	laminate quote option	+\$0
<b>76</b>	light brown walnut	+\$0
<b>0R</b>	light khaki	+\$0
<b>0U</b>	light sand	+\$0
<b>WY</b>	medium cherry	+\$0
<b>HM</b>	natural maple	+\$0
<b>WL</b>	sandstone	+\$0
<b>LU</b>	soft white	+\$0
<b>98</b>	studio white	+\$0
<b>HY</b>	walnut on cherry	+\$0
<b>91</b>	white	+\$0

## Step 11. Wood Case Finish

For veneer (W)

<b>ED</b>	aged cherry	+\$0
<b>IZ</b>	aged teak	+\$0
<b>40</b>	dark brown walnut	+\$0
<b>5K</b>	honey maple	+\$0
<b>2U</b>	light brown walnut	+\$0
<b>0Z</b>	medium cherry	+\$0
<b>UL</b>	natural maple	+\$0
<b>STP</b>	stain-to-match on maple (nonstandard)	+\$22
<b>WQT</b>	veneer quote option	+\$0
<b>UX</b>	walnut on cherry	+\$0

## Step 12. Laminate Top/Edge Finish

For laminate top/edge (L)

<b>HX</b>	aged cherry	+\$0
<b>2K</b>	aged teak	+\$0
<b>8D</b>	ash grey	+\$0
<b>BKN</b>	black	+\$0
<b>0W</b>	dark brown walnut	+\$0
<b>0X</b>	dark folkstone grey	+\$0
<b>1K</b>	dark khaki	+\$0
<b>0S</b>	dark sand	+\$0
<b>0V</b>	dark sandstone	+\$0
<b>8Q</b>	folkstone grey	+\$0

## Terra Treatment TV Cabinets

<b>OG</b>	honey maple	+\$0
<b>LQT</b>	laminated quote option	+\$0
<b>76</b>	light brown walnut	+\$0
<b>OR</b>	light khaki	+\$0
<b>OU</b>	light sand	+\$0
<b>WY</b>	medium cherry	+\$0
<b>HM</b>	natural maple	+\$0
<b>WL</b>	sandstone	+\$0
<b>LU</b>	soft white	+\$0
<b>98</b>	studio white	+\$0
<b>HY</b>	walnut on cherry	+\$0
<b>91</b>	white	+\$0

**Step 12. Solid Surface Top/Edge Finish***For solid surface top/edge (K)*

<b>QB</b>	bisque	+\$0
<b>58</b>	cameo white	+\$0
<b>CQ</b>	glacier white	+\$0

**Step 13. MicrobeCare Selection**

<b>MCN</b>	no MicrobeCare protection	+\$0
------------	---------------------------	------

Patient Chairs

Recliners

Rockers &amp; Gliders

Overbed Tables

Sleepover Seating

Casegoods

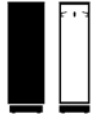
Accessories

# Terra Treatment Wardrobe

## Terra Treatment Wardrobe

### Standard Features

- Same standard as Terra Casegoods for Treatment Areas features.



### Terra Wardrobe, 15" Wide, with Three Clothes Hooks

Weight: 74.5 lbs

	Price	Depth	Height
<i>List prices for base model</i>	\$1,071	18"	54"

#### Step 1.

**TRA**

#### Step 2. Size

**56** 15" wide +\$1071

#### Step 3. Case Material

**L** laminate +\$0  
**W** veneer +\$219

#### Step 4. Top Material

**L** laminate top/edge +\$0  
**K** solid surface top/edge +\$328

#### Step 5. Attachment Type

**F** freestanding +\$0  
**L** ganged LSF +\$0  
**R** ganged RSF +\$0

#### Step 6. Laminate Case Finish

*For laminate (L)*

**HX** aged cherry +\$0  
**2K** aged teak +\$0  
**8D** ash grey +\$0  
**BKN** black +\$0  
**OW** dark brown walnut +\$0  
**OX** dark folkstone grey +\$0  
**1K** dark khaki +\$0  
**OS** dark sand +\$0  
**OV** dark sandstone +\$0  
**8Q** folkstone grey +\$0  
**OG** honey maple +\$0  
**LQT** laminate quote option +\$0  
**76** light brown walnut +\$0  
**OR** light khaki +\$0  
**OU** light sand +\$0  
**WY** medium cherry +\$0  
**HM** natural maple +\$0  
**WL** sandstone +\$0  
**LU** soft white +\$0  
**98** studio white +\$0  
**HY** walnut on cherry +\$0  
**91** white +\$0

#### Step 6. Wood Case Finish

*For veneer (W)*

**ED** aged cherry +\$0  
**IZ** aged teak +\$0  
**40** dark brown walnut +\$0  
**5K** honey maple +\$0  
**2U** light brown walnut +\$0  
**OZ** medium cherry +\$0  
**UL** natural maple +\$0  
**STP** stain-to-match on maple (nonstandard) +\$22  
**WQT** veneer quote option +\$0  
**UX** walnut on cherry +\$0

#### Step 7. Laminate Top/Edge Finish

*For laminate top/edge (L)*

**HX** aged cherry +\$0  
**2K** aged teak +\$0  
**8D** ash grey +\$0  
**BKN** black +\$0  
**OW** dark brown walnut +\$0  
**OX** dark folkstone grey +\$0  
**1K** dark khaki +\$0  
**OS** dark sand +\$0  
**OV** dark sandstone +\$0  
**8Q** folkstone grey +\$0  
**OG** honey maple +\$0  
**LQT** laminate quote option +\$0  
**76** light brown walnut +\$0  
**OR** light khaki +\$0  
**OU** light sand +\$0  
**WY** medium cherry +\$0  
**HM** natural maple +\$0  
**WL** sandstone +\$0  
**LU** soft white +\$0  
**98** studio white +\$0  
**HY** walnut on cherry +\$0  
**91** white +\$0

#### Step 7. Solid Surface Top/Edge Finish

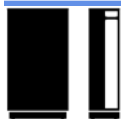
*For solid surface top/edge (K)*

**QB** bisque +\$0  
**58** cameo white +\$0  
**CQ** glacier white +\$0

#### Step 8. MicrobeCare Selection

**MCN** no MicrobeCare protection +\$0

## Terra Treatment Wardrobe



## Terra Shared Wardrobe with Clothes Bar, 15" Wide

Weight: 144 lbs

	Price	Depth	Height
<i>List prices for base model</i>	\$1,457	29.75"	54"

## Step 1.

TRA

## Step 2. Size

58 15" wide +\$1457

## Step 3. Case Material

L laminate +\$0  
 W veneer +\$219

## Step 4. Top Material

L laminate top/edge +\$0  
 K solid surface top/edge +\$383

## Step 5. Attachment Type

F freestanding +\$0  
 L ganged LSF +\$0  
 R ganged RSF +\$0

## Step 6. Laminate Case Finish

*For laminate (L)*

HX aged cherry +\$0  
 2K aged teak +\$0  
 8D ash grey +\$0  
 BKN black +\$0  
 OW dark brown walnut +\$0  
 OX dark folkstone grey +\$0  
 1K dark khaki +\$0  
 OS dark sand +\$0  
 OV dark sandstone +\$0  
 8Q folkstone grey +\$0  
 OG honey maple +\$0  
 LQT laminate quote option +\$0  
 76 light brown walnut +\$0  
 OR light khaki +\$0  
 OU light sand +\$0  
 WY medium cherry +\$0  
 HM natural maple +\$0  
 PX Nemschoff light cherry +\$0  
 WL sandstone +\$0  
 LU soft white +\$0  
 98 studio white +\$0  
 HY walnut on cherry +\$0  
 91 white +\$0

## Step 6. Wood Case Finish

*For veneer (W)*

ED aged cherry +\$0  
 IZ aged teak +\$0  
 40 dark brown walnut +\$0

5K honey maple +\$0  
 8K light brown cherry +\$0  
 2U light brown walnut +\$0  
 OZ medium cherry +\$0  
 UL natural maple +\$0  
 STP stain-to-match on maple (nonstandard) +\$22  
 WQT veneer quote option +\$0  
 UX walnut on cherry +\$0

## Step 7. Laminate Top/Edge Finish

*For laminate top/edge (L)*

HX aged cherry +\$0  
 2K aged teak +\$0  
 8D ash grey +\$0  
 BKN black +\$0  
 OW dark brown walnut +\$0  
 OX dark folkstone grey +\$0  
 1K dark khaki +\$0  
 OS dark sand +\$0  
 OV dark sandstone +\$0  
 8Q folkstone grey +\$0  
 OG honey maple +\$0  
 LQT laminate quote option +\$0  
 76 light brown walnut +\$0  
 OR light khaki +\$0  
 OU light sand +\$0  
 WY medium cherry +\$0  
 HM natural maple +\$0  
 PX Nemschoff light cherry +\$0  
 WL sandstone +\$0  
 LU soft white +\$0  
 98 studio white +\$0  
 HY walnut on cherry +\$0  
 91 white +\$0

## Step 7. Solid Surface Top/Edge Finish

*For solid surface top/edge (K)*

QB bisque +\$0  
 58 cameo white +\$0  
 CQ glacier white +\$0

## Step 8. MicrobeCare Selection

MCN no MicrobeCare protection +\$0

Patient Chairs

Recliners

Rockers &amp; Gliders

Overbed Tables

Sleepover Seating

Casegoods

Accessories

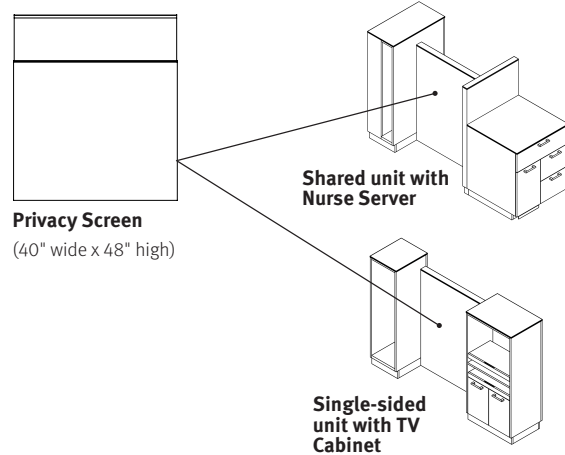
# Terra Treatment Partition

## Terra Treatment Partition

### Standard Features

- Same standard as Terra Casegoods for Treatment Areas features, plus:
- Fixed laminate panel
- 2" glides

### Privacy Screen locations:



### Terra Movable Partition, 45.5" Wide

	Price	Height
<i>List prices for base model</i>	\$1,162	54"

#### Step 1.

**TRA**

#### Step 2. Size

**54** 45.5" wide +\$1162

#### Step 3. Case Material

**L** laminate +\$0  
**W** veneer +\$219

#### Step 4. Top Material

**L** laminate top/edge +\$0  
**K** solid surface top/edge +\$98

#### Step 5. Casters/Glides

**CSL** include 2" swivel locking casters +\$219  
**STD** standard glides +\$0

#### Step 6. Laminate Case Finish

*For laminate (L)*

**HX** aged cherry +\$0  
**2K** aged teak +\$0  
**8D** ash grey +\$0  
**BKN** black +\$0  
**OW** dark brown walnut +\$0  
**OX** dark folkstone grey +\$0  
**1K** dark khaki +\$0  
**OS** dark sand +\$0  
**OV** dark sandstone +\$0

**8Q** folkstone grey +\$0  
**OG** honey maple +\$0  
**LQT** laminate quote option +\$0  
**76** light brown walnut +\$0  
**OR** light khaki +\$0  
**OU** light sand +\$0  
**WY** medium cherry +\$0  
**HM** natural maple +\$0  
**WL** sandstone +\$0  
**LU** soft white +\$0  
**98** studio white +\$0  
**HY** walnut on cherry +\$0  
**91** white +\$0

#### Step 6. Wood Case Finish

*For veneer (W)*

**ED** aged cherry +\$0  
**IZ** aged teak +\$0  
**40** dark brown walnut +\$0  
**5K** honey maple +\$0  
**8K** light brown cherry +\$0  
**2U** light brown walnut +\$0  
**OZ** medium cherry +\$0  
**UL** natural maple +\$0  
**STP** stain-to-match on maple (nonstandard) +\$22  
**WQT** veneer quote option +\$0  
**UX** walnut on cherry +\$0

## Terra Treatment Partition

**Step 7. Laminate Top/Edge Finish***For laminate top/edge (L)*

<b>HX</b>	aged cherry	+\$0
<b>2K</b>	aged teak	+\$0
<b>8D</b>	ash grey	+\$0
<b>BKN</b>	black	+\$0
<b>0W</b>	dark brown walnut	+\$0
<b>0X</b>	dark folkstone grey	+\$0
<b>1K</b>	dark khaki	+\$0
<b>0S</b>	dark sand	+\$0
<b>0V</b>	dark sandstone	+\$0
<b>8Q</b>	folkstone grey	+\$0
<b>OG</b>	honey maple	+\$0
<b>LQT</b>	laminate quote option	+\$0
<b>76</b>	light brown walnut	+\$0
<b>0R</b>	light khaki	+\$0
<b>0U</b>	light sand	+\$0
<b>WY</b>	medium cherry	+\$0
<b>HM</b>	natural maple	+\$0
<b>WL</b>	sandstone	+\$0
<b>LU</b>	soft white	+\$0
<b>98</b>	studio white	+\$0
<b>HY</b>	walnut on cherry	+\$0
<b>91</b>	white	+\$0

**Step 7. Solid Surface Top/Edge Finish***For solid surface top/edge (K)*

<b>QB</b>	bisque	+\$0
<b>58</b>	cameo white	+\$0
<b>CQ</b>	glacier white	+\$0

**Step 8. MicrobeCare Selection**

<b>MCN</b>	no MicrobeCare protection	+\$0
------------	---------------------------	------

Patient Chairs

Recliners

Rockers &amp; Gliders

Overbed Tables

Sleepover Seating

Casegoods

Accessories

# Terra Treatment Partition



## Terra Privacy Screen, 40" Wide

	Price	Height
<i>List prices for base model</i>	\$856	36"

### Step 1.

**TRA**

### Step 2. Size

**65** 40" wide +\$856

### Step 3. Case Material

**L** laminate +\$0  
**W** veneer +\$219

### Step 4. Privacy Screen Material

*For laminate (L)*

**A** adjustable 3form screen +\$1092  
**F** fixed 3form screen +\$602  
**L** laminate privacy panel +\$0

*For veneer (W)*

**A** adjustable 3form screen +\$1092  
**F** fixed 3form screen +\$602  
**W** wood privacy panel +\$0

### Step 5. Laminate Case Finish

*For laminate (L) with laminate privacy panel (L), or fixed 3form screen (F), or adjustable 3form screen (A)*

**HX** aged cherry +\$0  
**2K** aged teak +\$0  
**8D** ash grey +\$0  
**BKN** black +\$0  
**0W** dark brown walnut +\$0  
**0X** dark folkstone grey +\$0  
**1K** dark khaki +\$0  
**0S** dark sand +\$0  
**0V** dark sandstone +\$0  
**8Q** folkstone grey +\$0  
**0G** honey maple +\$0  
**LQT** laminate quote option +\$0  
**76** light brown walnut +\$0  
**OR** light khaki +\$0

**0U** light sand +\$0  
**WY** medium cherry +\$0  
**HM** natural maple +\$0  
**PX** Nemschoff light cherry +\$0  
**WL** sandstone +\$0  
**LU** soft white +\$0  
**98** studio white +\$0  
**HY** walnut on cherry +\$0  
**91** white +\$0

### Step 5. Wood Case Finish

*For veneer (W) with wood privacy panel (W), or fixed 3form screen (F), or adjustable 3form screen (A)*

**ED** aged cherry +\$0  
**IZ** aged teak +\$0  
**40** dark brown walnut +\$0  
**5K** honey maple +\$0  
**8K** light brown cherry +\$0  
**2U** light brown walnut +\$0  
**0Z** medium cherry +\$0  
**UL** natural maple +\$0  
**STP** stain-to-match on maple (nonstandard) +\$22  
**WQT** veneer quote option +\$0  
**UX** walnut on cherry +\$0

### Step 6. 3form Finish

*For fixed 3form screen (F) or adjustable 3form screen (A)*

**FHG** hush gesso +\$0  
**FIW** ion wheat +\$0  
**FPW** varia pure white +\$0

### Step 7. Pull Finish

*For fixed 3form screen (F) or adjustable 3form screen (A)*

**QB** bisque +\$0  
**58** cameo white +\$0  
**CQ** glacier white +\$0

### Step 8. MicrobeCare Selection

**MCN** no MicrobeCare protection +\$0



## Terra Treatment Benches

## Terra Treatment Benches

## Standard Features

- Same standard as Terra Casegoods for Treatment Areas features

## Terra Bench, 39" Wide

Depth: 13.75" | Height: 18.5" | Seat Height: 13.75" | Weight: 46 lbs



	Series 2	Series 3	Series 4	Series 5	Series 6	Series 7	Series 8	COM
<i>List prices for base model</i>	\$1,013	\$1,065	\$1,152	\$1,244	\$1,352	\$1,461	\$1,597	\$1,065

## Step 1.

TRA

## Step 2. Size

<b>67</b>	39" wide								
									+\$1065

## Step 3. Case Material

<b>L</b>	laminate								+\$0
<b>W</b>	veneer								+\$114

## Step 4. Base Style

<b>M</b>	metal legs								+\$0
<b>S</b>	standard plinth base								+\$0

## Step 5. Fire Retardancy

<b>NR</b>	not fire retardant (non CTB-133)								+\$0
-----------	----------------------------------	--	--	--	--	--	--	--	------

## Step 6. Fabric Configuration

<b>1F</b>	one fabric								+\$0
-----------	------------	--	--	--	--	--	--	--	------

## Step 7. Powdercoat Finish

<b>8D</b>	ash grey								+\$394
<b>BK</b>	black								+\$394
<b>G2</b>	graphite satin								+\$394
<b>G1</b>	graphite textured								+\$394
<b>MSS</b>	metallic silver smooth								+\$394
<b>MST</b>	metallic silver textured								+\$394
<b>3K</b>	nickel								+\$394
<b>PQT</b>	powdercoat quote option								+\$0
<b>LU</b>	soft white								+\$394
<b>XTS</b>	titanium smooth								+\$394
<b>XTT</b>	titanium textured								+\$394
<b>4K</b>	umber								+\$394

## Step 8. Laminate Case Finish

For laminate (L)

<b>HX</b>	aged cherry								+\$0
<b>2K</b>	aged teak								+\$0
<b>8D</b>	ash grey								+\$0
<b>BKN</b>	black								+\$0
<b>OW</b>	dark brown walnut								+\$0
<b>OX</b>	dark folkstone grey								+\$0
<b>1K</b>	dark khaki								+\$0
<b>OS</b>	dark sand								+\$0
<b>OV</b>	dark sandstone								+\$0
<b>8Q</b>	folkstone grey								+\$0

<b>OG</b>	honey maple								+\$0
<b>LQT</b>	laminate quote option								+\$0
<b>76</b>	light brown walnut								+\$0
<b>OR</b>	light khaki								+\$0
<b>OU</b>	light sand								+\$0
<b>WY</b>	medium cherry								+\$0
<b>HM</b>	natural maple								+\$0
<b>PX</b>	Nemschoff light cherry								+\$0
<b>WL</b>	sandstone								+\$0
<b>LU</b>	soft white								+\$0
<b>98</b>	studio white								+\$0
<b>HY</b>	walnut on cherry								+\$0
<b>91</b>	white								+\$0

## Step 8. Wood Case Finish

For veneer (W)

<b>ED</b>	aged cherry								+\$0
<b>IZ</b>	aged teak								+\$0
<b>40</b>	dark brown walnut								+\$0
<b>5K</b>	honey maple								+\$0
<b>8K</b>	light brown cherry								+\$0
<b>2U</b>	light brown walnut								+\$0
<b>0Z</b>	medium cherry								+\$0
<b>UL</b>	natural maple								+\$0
<b>STP</b>	stain-to-match on maple (nonstandard)								+\$22
<b>WQT</b>	veneer quote option								+\$0
<b>UX</b>	walnut on cherry								+\$0

## Step 9. Moisture Barrier Option

<b>MBS</b>	moisture barrier seat only								+\$75
<b>MBN</b>	no moisture barrier								+\$0

## Step 10. MicrobeCare Selection

<b>MCY</b>	MicrobeCare protection								+\$50
<b>MCN</b>	no MicrobeCare protection								+\$0

## Step 11. Fabric

<b>Series 2</b>									-\$52
<b>Series 3</b>									+\$0
<b>Series 4</b>									+\$87
<b>Series 5</b>									+\$179
<b>Series 6</b>									+\$287
<b>Series 7</b>									+\$396
<b>Series 8</b>									+\$532

# Terra Treatment Benches

## Terra Bench with Storage, 39" Wide

Depth: 13.75" | Height: 18.5" | Seat Height: 13.75" | Weight: 53 lbs



	Series 2	Series 3	Series 4	Series 5	Series 6	Series 7	Series 8	COM
<i>List prices for base model</i>	\$1,216	\$1,268	\$1,355	\$1,447	\$1,555	\$1,664	\$1,800	\$1,268

### Step 1.

**TRA**

### Step 2. Size

**68** 39" wide +\$1268

### Step 3. Case Material

**L** laminate +\$0  
**W** veneer +\$114

### Step 4. Base Style

**M** metal legs +\$0  
**S** standard plinth base +\$0

### Step 5. Fire Retardancy

**NR** not fire retardant (non CTB-133) +\$0

### Step 6. Fabric Configuration

**1F** one fabric +\$0

### Step 7. Powdercoat Finish

**8D** ash grey +\$394  
**BK** black +\$394  
**G2** graphite satin +\$394  
**G1** graphite textured +\$394  
**MSS** metallic silver smooth +\$394  
**MST** metallic silver textured +\$394  
**3K** nickel +\$394  
**PQT** powdercoat quote option +\$0  
**LU** soft white +\$394  
**XTS** titanium smooth +\$394  
**XTT** titanium textured +\$394  
**4K** umber +\$394

### Step 8. Laminate Case Finish

*For laminate (L)*

**HX** aged cherry +\$0  
**2K** aged teak +\$0  
**8D** ash grey +\$0  
**BKN** black +\$0  
**OW** dark brown walnut +\$0  
**OX** dark folkstone grey +\$0  
**1K** dark khaki +\$0  
**OS** dark sand +\$0  
**OV** dark sandstone +\$0

**8Q** folkstone grey +\$0  
**OG** honey maple +\$0  
**LQT** laminate quote option +\$0  
**76** light brown walnut +\$0  
**OR** light khaki +\$0  
**OU** light sand +\$0  
**WY** medium cherry +\$0  
**HM** natural maple +\$0  
**WL** sandstone +\$0  
**LU** soft white +\$0  
**98** studio white +\$0  
**HY** walnut on cherry +\$0  
**91** white +\$0

### Step 8. Wood Case Finish

*For veneer (W)*

**ED** aged cherry +\$0  
**IZ** aged teak +\$0  
**40** dark brown walnut +\$0  
**5K** honey maple +\$0  
**2U** light brown walnut +\$0  
**OZ** medium cherry +\$0  
**UL** natural maple +\$0  
**STP** stain-to-match on maple (nonstandard) +\$22  
**WQT** veneer quote option +\$0  
**UX** walnut on cherry +\$0

### Step 9. Moisture Barrier Option

**MBS** moisture barrier seat only +\$75  
**MBN** no moisture barrier +\$0

### Step 10. MicrobeCare Selection

**MCY** MicrobeCare protection +\$50  
**MCN** no MicrobeCare protection +\$0

### Step 11. Fabric

**Series 2** -\$52  
**Series 3** +\$0  
**Series 4** +\$87  
**Series 5** +\$179  
**Series 6** +\$287  
**Series 7** +\$396  
**Series 8** +\$532